



The Washington

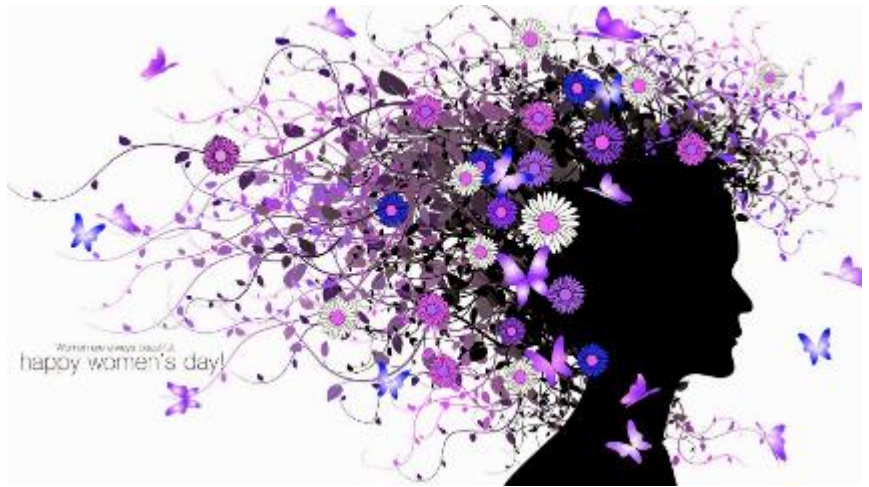
Spring 2017
Volume 100, Number 4

ClubWOMAN

S.H.O.E.S... Serving Has Opportunities Everyone Shares



International Women's Day



International Women's Day (March 8) is a global day celebrating the social, economic, cultural and political achievements of women. The day also marks a call to action for accelerating gender parity.

International Women's Day (IWD) has been observed since in the early 1900's - a time of great expansion and turbulence in the industrialized world that saw booming population growth and the rise of radical ideologies. International Women's Day is a collective day of global celebration and a call for gender parity. No one government, NGO, charity, corporation, academic institution, women's network or media hub is solely responsible for International Women's Day. Many organizations declare an annual IWD theme that supports their specific agenda or cause, and some of these are adopted more widely with relevance than others.

"The story of women's struggle for equality belongs to no single feminist nor to any one organization but to the collective efforts of all who care about human rights," says world-renowned feminist, journalist and social and political activist Gloria Steinem. Thus International Women's Day is all about unity, celebration, reflection, advocacy and action - whatever that looks like globally at a local level. But one thing is for sure, International Women's Day has been occurring for well over a century - and continues to grow from strength to strength.

Continue on to page 2 for more...



International Women's Day continued...

What values drive International Women's Day?

International Women's Day means different things to different people, but the global focus on equality and celebration is clear.

Throughout ancient and modern history, women have collaborated and lead purposeful action to redress inequality in the hope of a better future for their communities, children and themselves. Whether through bold well-documented action or through humble resistance that never made it into the history books, women have united for equality and achievement forever.

And along the way, one particularly powerful collaboration lead to the formation of a globally united moment for women across countries to come together in hope and action. That moment is "International Women's Day".

Started in the early 1900's, the almighty and tenacious Suffragettes forged purposeful action for equality. It was the Suffragettes who started International Women's Day, with the first officially named "International Women's Day" event held in 1911.

And still to this day, International Women's Day continues to be a powerful platform globally that unifies tenacity and drives action for gender parity, while celebrating the social, cultural, economic and political achievements of women.

The specific values that drive International Women's Day provide an important parameter for guiding the action, behaviors and ethos associated with this critical and globally-supported day.

The ten International Women's Day values are:

Justice
Dignity
Hope
Equality
Collaboration
Tenacity
Appreciation
Respect
Empathy
Forgiveness



As modern day Suffragettes - both female and male - let us continue the work and spirit of the almighty Suffragettes, fighting the good fight. And let us recognize, honor and celebrate the important and impressive achievements of women globally.

For a more detailed description of each value, as well as a fascinating historical timeline of the day and its meaning, see <https://www.internationalwomensday.com>

Thoughts from the sole...



Dear GFWC Washington State Members:

As I sit looking out my window at the glaze of ice on the driveway, I begin to wish for spring. This past winter many of us have spent more days indoors because of the bad weather. We are ready for warmer weather and are ready to run away from our homes. When you are thinking of your get away, I hope that you are thinking about joining your friends at GFWC Washington State Convention. Our convention this year will be held in Richland at the Shilo Inn beginning April 21 and ending April 23.

The Convention Committee and the Shilo Staff are ready and excited to welcome all of our members to this 121st Convention. Enclosed with this edition of our Clubwoman is a preliminary agenda, room/meal information and registration form.

Since the deadline for the Clubwoman is drawing closer I wanted to get this issue out so you have plenty of time to make plans to attend. Many of you know, we will not have a GFWC Officer with us this convention. Unfortunately, our convention weekend is a very popular one. Everyone at GFWC was booked. We are working on having some special speakers that we hope you will enjoy.

Everyone is welcome to come and help celebrate by "WALKING THE RED CARPET – CELEBRATING OUR ACCOMPLISHMENTS". You won't want to miss this special convention.

*Love, in Federation,
Tina Bair
GFWC-Washington State
President 2016-18*

Community Service Programs...CSP's



Arts

Elisha Heath
Chairman

GFWC PHOTOGRAPHY CONTESTS

Encourage artistic expression, while recognizing achievement in photography. There are 3 opportunities to participate:

THE WORLD IN PICTURES - These photographs capture the beauty of the world and people around us in 3 categories:

- **Living Things**—adults, animals, children domestic birds, fish, flowers, insects, reptiles, wildlife.
- **Scenes**—city, landscape, rural, skies, sunrise, sunset, waterscapes, weather.
- **Still Life**—abstract (any assemblage of objects either in an arrangement or natural setting), buildings, monuments.

GFWC VOLUNTEERS IN ACTION provides members with the opportunity to demonstrate their volunteer activities through photography.

A YEAR IN PICTURES—also known as the GFWC Calendar Contest features photographs depicting the twelve months of the year, providing members the opportunity to showcase their talents while supporting GFWC through the fundraising calendar.

Plan for your entry this year as you snap pictures. You never know when the "good one" will happen! Share your talents and support these contests.



Conservation

Valerie Huey
Chairman

WHAT DOES CONSERVATION MEAN TO YOU?

My youngest grand-daughter just celebrated her 5th birthday. She wanted a special doll which she received from her parents. "Whoo hoo!" you say then ask, "What's that got to do with conservation?" "Nothing," I reply adding that I bought her a few beautiful outfits for her doll (made by a friend of mine and not purchased from the store.) Still, you wonder "What's all this got to do with conservation?"

Nothing really, until I tell you I used a decorated storage box as the giftwrap tied with reusable fabric ribbon. She was as happy with the box as she was with any of her gifts and immediately placed all of her doll's clothing and accessories inside making everything neat and tidy.

The point of this story is to challenge you to think "outside the box" in repurposing or "upcycling" otherwise disposable items to keep them out of the trash and landfills.

By the way, the family is getting ready to move into a new house and my grand-daughter is thrilled to have her things "safely packed" inside her special box.

Valerie Huey, GFWC WS Chairman



ARE YOU BRINGING ART TO RICHLAND?

Please bring a completed version of this form with your entries for the arts room at State Convention. Also please remember that the writing competition deadline is February 15. If you have any questions, please contact Linda Butcher, Art Room Chairman.

GFWC WASHINGTON STATE ENTRY FORM FOR ART ROOM AND WRITING CONTEST 2016 - 2018

A copy of this form shall accompany each entry and the Consent Form shall be attached as needed. Refer to the GFWC Photography for photography guidelines.

Wearable Art
Jewelry
Crafts

Fiber
Quilts
Needlework

Paintings – Both Member and Student

Photography Contest – Members

A Year in Picture
Feature
Scenic

GFWC Volunteers in Action
Natural History

Name of Participant_____

Club_____

Club President (If school art entry)_____

Address_____

Phone_____ Member to pick up entry_____

Age (if student)_____ Grade_____ School_____

Community Service Programs...CSP's



International Outreach

Bonnie Rail
Chairman

On behalf of children, save the UN

Funding for UN Foundation Programs is at risk, so I'm asking you to sign the enclosed letter from Shot@Life. Note that in order to send it to Maria Cantwell, you'll have to log onto her website (<https://www.cantwell.senate.gov/contact>) and send the text using the e-mail tool located there. Please forward to anyone else that you think would be supportive of this program.

"AS YOU KNOW, LIFE-SAVING IMMUNIZATIONS ARE ONE OF THE MOST SUCCESSFUL AND COST-EFFECTIVE PUBLIC HEALTH INTERVENTIONS IN HISTORY. Every year they save the lives of 2.5 million children. For years, strong American financial support for the United Nations has delivered lifesaving vaccines to the world's most vulnerable populations, including children affected by famine, extreme poverty, conflict, and natural disasters.

That support may soon be under threat, and Shot@Life is asking you to make your voice heard to protect children around the world.

Without UN agencies such as UNICEF and the World Health Organization (WHO) to buy, deliver, and set global standards for vaccines, millions of children worldwide will be left exposed to deadly and debilitating diseases.

- *In 2015, UNICEF procured 2.8 billion doses of vaccines for 95 countries, protecting 45% of the world's poorest children under 5 from preventable diseases.*
- *In 2015, 296 million doses of measles vaccine & 1.6 billion doses of the oral polio vaccine were administered.*
- *In 2016, only three countries reported cases of wild polio transmission, down from 40,000 a year just thirty years ago.*

Between 2000-2015 UNICEF's social mobilization, vaccine procurement, and delivery efforts around measles helped save an estimated 20.3 MILLION YOUNG LIVES.

A strong United Nations is in America's interest. Stopping infectious diseases before they can spread protects the health of Americans at home and abroad. Additionally, each year American companies headquartered in 30 U.S. states receive more than \$500 million in UN contracts.

We at Shot@Life are calling on you, our supporters, to take action now to ensure that U.S. financial aid for the UN does not disappear. Make your voice heard in Washington by telling your members of Congress that strong U.S. support for the United Nations is critical to protecting the world's most vulnerable children from devastating diseases such as polio, measles, and pneumonia.

*Thank you for your support,
Martha Rebour
Director, Shot@Life
United Nations Foundation*

ENCOURAGE A FRIEND TO BE A CHILD'S SHOT AT LIFE

United Nations Foundation
1750 Pennsylvania Avenue, NW, Suite 300, Washington, DC 20006

Community Service Programs...CSP's



Public Issues

Cindy Jorgensen
Chairman

Examples of Community Service Programs Citizenship

As your Public Issues chairman, I thought I'd share some ideas on how clubs may support the Public Issues Community Service Program in Citizenship found in GFWC Club Manual. I figured with a new administration Citizenship is a good topic to think through in how all of us may get involved.

Citizenship

- Educate club members and local communities on the rights and responsibilities of citizenship.
- Use resources, including GFWC Resolutions, to increase patriotism, pride in heritage, and active community involvement. As stated in the Public Policy statement for GFWC, GFWC is a nonpartisan, nondenominational organization. Clubwomen are allowed to advocate for policies or legislation, but NOT allowed by law to endorse candidates or engage in partisan politics. GFWC members must separate personal political activities from official club or state federation work.
- Encourage active involvement in the legislation and regulation of issues that affect the world around you. Also linked to Public Policy, The Legislative Action Center is a powerful tool for GFWC's public issues and advocacy efforts. Track bills, contact your local representative and take action on issues germane to GFWC Resolutions.
- Celebrate patriotism.
- Visit, volunteer, and help preserve historic sites, monuments, and homes.
- Help someone study for the U.S. Citizenship Test. Visit <https://www.uscis.gov/us-citizenship/naturalization-test>
- Hold a National Issues Forum.
- Work to promote student volunteer service requirement in schools.
- Promote classroom and member education on American heritage symbols and flag etiquette.

Cindy Jorgensen
GFWC-WS Public Issues Chairman



Advancement Areas

FUNdraising

Nardine Sandberg
Chairman

Hear Ye, Hear Ye! GFWC-WS Clubs!

Hello Ladies!



GFWC-WS 2017 Spring Convention is around the corner and we are asking all GFWC-WS Clubs to help us with fundraising by donating a wide-mouth flower vase, "Vase of Creations." Fill it with, **as an example**; beauty products, drawer scents, a new book, scarves, personal safety protection items; small useful home products, such as Scrub Daddies...do you know of any new cleaning products? **OR**, clubs can choose their own container that will accommodate their items. Be creative, share your ideas old and new! Make your **vase or container** exciting with things we love or need or say "Aha!"

To stay on track for GFWC-WS FUNdraiser Committee's theme, SAFETY, HOME and BEAUTY, we will raffle a few personal safety items along with police department's safety tips handouts, beauty items and one more emergency preparedness kit (EPK). At this convention, we will be busy recognizing all the wonderful and hard work clubs provided in their community, members art display...and we are going to have fun seeing all the creative packaged items you put together for fundraising.

Please call us should you have questions or comments about fundraising or to share ideas...or orders of our current endorsed organizations, Flower Power and Terri Lynn's Nuts and Candies.

We are proud to be in GFWC! See you at the GFWC-WS Washington State 121st Annual Convention, April 21 – 23, 2017.

Thank you! All fundraising we raise will go to our WS treasurer to cover convention expenses and to continue informational, educational and communication training...and FUN for all members.



Nardine Sandberg
GFWC-WS FUNdraiser Chairman
EMAIL: nardinesandberg@gmail.com
Ph: 360-352-0848

FUNdraiser Committee Members:
Gail Crump and Cassy Faulkner

Advancement Areas

Leadership

Kathie Jorgensen
Chairman

LEADERSHIP is for everyone...

I read an article the other day titled: "Shut Up and Listen". I was intrigued, but I did not want to title this article like that... We will concentrate on the listening part and let the rest go.

Being entrusted with a leadership role (Club President) requires a shift in mindset. Leadership is a term that has been abused. All clubs need it, but no one is quite sure what it means. As your club's leader you have had to adopt a mindset of good leadership.

1. You don't have to have all the ideas and you don't have to have everything figured out.
2. You need to have a point of view and you shouldn't be afraid to share that.
3. To become a leader you don't have to excel at just one thing. Instead, put yourself in uncomfortable situations as often as possible. Stretch your parameters. A good leader will find comfort and calm in any situation, and this skill only comes from taking risks.

Many times the most effective form of leadership is stepping aside and letting others take over especially when it comes to working on projects.

Ask questions and listen.

Find out what really motivates your members...what are they passionate about? Encourage conversation around inspiring topics and follow the energy by asking, "and what else?"

Check your impulse for telling and instead ask more questions.

It is amazing what information develops out of not talking. Ask questions and allow members to figure things out for themselves.

Give and receive helpful feedback after every project.

When the project is over, find out what worked and what didn't. Give opportunities where members can stretch their interests.

Remember: everyone has their own way of looking at things. Sometimes there is no "right" way. Next time, listen and see what happens.

Have a great Spring. I look forward to reading your award entries. See you in April.

Kathie Jorgensen
GFWC-WS Leadership Chairman

Our Federation Forest



FUNDS ARE AVAILABLE to begin work on the Orientation/Welcome area in the Catherine Montgomery Interpretive Center (CMIC) to enhance the visitors' experience as they enter the building.

The funds available must be used by the end of the fiscal year June 30, 2017, which means the interpretive staff is very busy rushing to meet the deadline.

Your Federation Forest Committee members are continuing to participate in meetings to finish DEVELOPING THE PLAN for an enriched and engaging visitor experience in other sections of the center, which includes a plan to accommodate a phased effort for design and installation of the plan components in the years ahead as funding becomes available. Char should have further information to share at Convention!

We encourage all of you to participate in our **GFWC-WS Annual Work Day at the park May 13**. The theme this year is: "**Celebrate Mother Earth in the Forest**". See the poster elsewhere in this publication advertising the event. Bring your family and friends. Ranger Ernster plans to join us. The entry area **may** look different—can't wait to see!

Arrive the day before and spend the night at: **Guest House Inn, 1000 Griffin Avenue, Enumclaw, WA 98022. Phone: 360 825-4490**, a Red Lion hotel, located in historic downtown Enumclaw, about 15 miles from Federation Forest. AARP, AAA and military discounts are offered. Travel to the park the next morning ready to work!

Federation Forest State Park is a continuing GFWC-WS Conservation Project since the 1925-1927 administration of Esther Maltby, our 16th President.

At right is a picture from last year's work day:

**WILL YOU BE
IN THE PICTURE
THIS YEAR?**

YOUR FEDERATION FOREST COMMITTEE
Char Lysne, Chairman;
Susan Tyler, Member; Lynn Cline, Member





Celebrate Mother Earth in the Forest



GFWC-WS Annual Work Day
May 13, 2017 – 10:00 am to ?

Federation Forest State Park

49201 SE Enumclaw Chinook Pass Rd, Enumclaw, WA 98022

Enjoy a day of work, education and fun

- Bring a sack lunch & hand gardening tools
- Coffee, tea, water & morning snacks provided
- Light work available for those unable to work in outside cleanup
- Weeding outside interpretive center
- Trail work crew will clean trails
- Children's activity, or game, depending on age & interest of kids
- Walk through the forest with Muckleshoot Oral Historian, who will identify edible plants and tribal uses
- Small gift for mothers in honor of Mother's Day May 14

Clubs of the State

GFWC Amalak

A bi-annual fundraiser for **Amalak** is our Christmas Tour of Homes. This year, we had three gorgeous homes that we spent days (actually a month) decorating and getting ready for the tour. We also have a wonderful Christmas Bake Sale with lots of trays of our best cookies and goodies; 2 beautiful raffle baskets and a Bazaar. On the day of the tour (December 8th), it started snowing – hard. If you’ve ever been to Kalama, you will know that 98% of Kalama is steep (slippery) hills. We were forced to cancel our wonderful tour. We were so disappointed. And, our potential tourists were disappointed. People come from miles around to tour our homes.

Thanks so much and Happy New Year.
Marcia LeFevre
President – Amalak

GFWC Amalak no longer has a website.
However, we do have a Facebook page.



The Best Made Plans...

Carol Day, Past President, Amalak

Twass time for the biannual Tour of Homes
A big fund raiser - so we all worked like gnomes

We planned and we schemed, we left nothing to chance
It was beauty in motion, we moved like a dance

We cooked and we cleaned, we decorated each place
The homes were all pictures of style and of grace

We all worked hard thru the days and the nights
Every house on the Tour was covered in lights

The trees were all lit, the stockings were hung
And while we worked, the Carols we sung

Finally done, we were ready to go
Then alas and alack, we were covered in snow!

Kalama was icy, both up hill and down
"We need to cancel "said the Pres with a frown

But two years from now WE WILL BE BACK
Cause you can't defeat members of Amalak



Clubs of the State

GFWC Battleground

Club members say "Merry Christmas" to kids and families

Five members representing the club placed several items under the tree at the recently opened Battle Ground School District's Family Resource Center. The diverse variety of gifts ranged from school supplies to toothbrushes to healthy snacks and even some needed diapers. The center works with area agencies and serves homeless students and families with limited means. Members were responding to a list of needs provided by the center.

Shown here are Valerie Huey, Club President Johanna Hyatt, Mary Lee Miller, Lois Simmons and the district's resource director, Lydia Sanders. Joining them was club photographer, Louise Tucker.



GFWC Battle Ground women see moving film

(We attended a movie after having to cancel our December and January meetings due to miserable weather.)

After a book discussion about a black lady whose cancer cells were used for science without her consent or any recognition, several GFWC women decided to view the movie, *Hidden Figures*, a true story about three black women in the NASA program. They were the "computers" before the invention of mechanical computers. They contributed vital calculations under hardships, both as women and as blacks.



In the photo are Sheila McCormack, Marla Polos, Anne Erickson, President Johanna Hyatt, Valerie Huey, Joyce Lewis and Louise Tucker. Is that Marilyn Monroe peeking between Joyce and Louise? We didn't know she was a GFWC sister!

GFWC Camas Washougal

Members of GFWC Camas-Washougal wrapped gifts and handed out Holiday cards and ornaments at the Quarry Senior Living prior to Christmas. In three hours over 150 gifts were wrapped for residents who might have difficulty wrapping gifts or getting out to purchase wrapping paper and ribbon.

From left: Tina Bair, Susan Bennett, Christy Kamps, Pat Suggs and Bonnie Walden



Clubs of the State

GFWC Capital Woman's Club

In the picture, our newest member, Lynn Cline, presents a "**Quarter Tube**" filled with \$130 worth of quarters to club Treasurer, Ellen Wagner at the January 16 meeting. The tube is made from clear PVC pipe with the diameter the size of a quarter and set in a base of a wooden fence post cap.

Filled to the top with quarters, it holds \$130 worth. Materials to build a tube cost \$20. The tube can be filled, emptied and reused as often as necessary to raise funds for a cause. Contact Lynn if you'd like one for your club or district!

Thank you, Lynn, for your wonderful idea and generous gift!



Members sorted pre-bagged toiletry articles to be distributed to local high schools. This was in support of the Homeless Back Pack program, a nonprofit organization that provides bags of food to homeless students for the weekend.



Clubs of the State

GFWC Chambers Bay

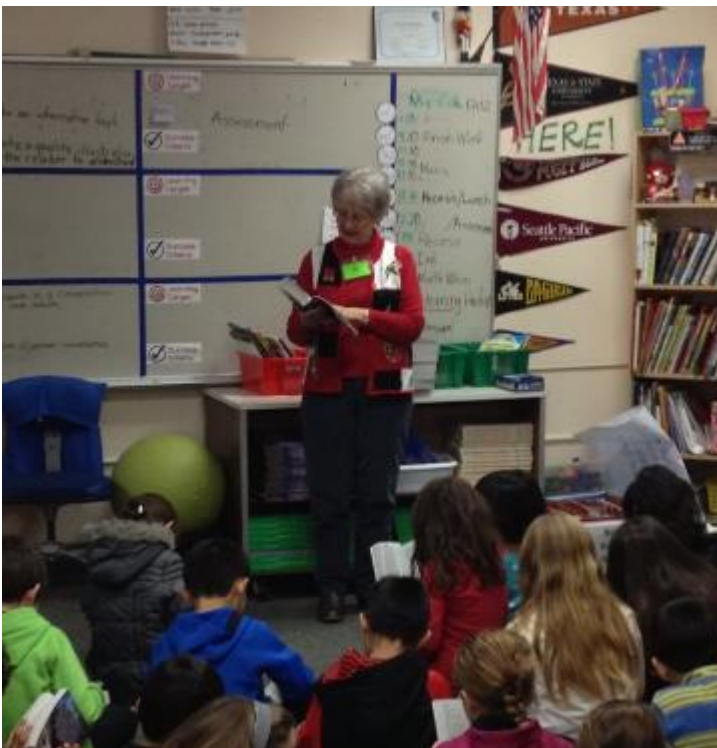
An American flag with an Operation Shafaq certificate were presented to Chambers Bay Women's Club. The flag was flown over the 628th Forward Surgical Team FOB Fenty, Jal Ana's, Afghanistan during October 1-8, 2016 in Honor of Chambers Bay. The Club had mailed Halloween items for the Surgical Team to bring some home to the hard-working Military. Among the unit, was Meghan Mugluston, Surgical nurse, daughter of member Marie Devlin. Meghan brought home the awards in December 2016 and Marie presented them to the club at the January 10, 2017 meeting. The flag will remain as the new Club flag.

Jeanine & Cindy
Co-presidents



Chambers Bay Women's Club has helped local families for the last several years during Thanksgiving and Christmas with food and gifts. This year we reached out to the local Junior and Senior High Schools to assist four families. The counselors at the schools were very appreciative and shared how excited the students were. Here is an excerpt from an email: "I spoke with one of the students this morning about her holiday and she shared that she felt it was the best one for a long time and I would attribute that to you and your organization." At Thanksgiving we provide food for a meal. One family had no means to cook a meal as they were living in their van so a reservation was made at our community sponsored dinner and they were given a Fred Meyer gift card. At Christmas we again provide food for a dinner and gifts personally purchased for each member of the family. This year we broke into teams which was highly successful. It warms our hearts to help those in need.

GFWC Sokico Women's Club



At left, Carolyn Johnson of Sokico Woman's Club, explaining to the third grade classes about their new dictionaries.

Sokico purchased and donated a total of 150 dictionaries to third grade students at Lake Dolloff & Camelot Elementary Schools in the Federal Way School District. Carolyn, Susan Tyler and Linda Butcher had the distinct pleasure of delivering & explaining how to use the new dictionaries to the eager recipients. For some, this is their first 'very own book', in which they get to put their own name.

Submitted by:
Linda Butcher, Co-President
GFWC Sokico Woman's Club

Clubs of the State

GFWC Chewelah

GFWC Chewelah Woman's Club reminded our community about Nat'l Wear RED Day for women's heart health on Friday February 3rd. Heart disease is the number 1 killer of women and the warning signs are different from those of men. Many businesses in town were given the red dress pins from our club for their employees to wear. See your health care professionals today and stay strong for those you love and those that love you. Happy Valentines Day everyone! ♥♥♥



GFWC Kitsap Peninsula



Retsil Ladies' Shopping and Visiting Day

Thank you to all of you who gathered clothing and those who came to help. Kathy said, "I wish you all could have been there to see the joy it brought to the ladies. One told me quietly "You know people forget about us or don't know about us. They think of the Veteran's home and think it's men. This is so nice to be able to come and shop and find things we like without having to go out and try to shop."

We had several men come and want to know what was happening. We promised them a men's event once we talk to Tami. Those of us there see the need, if nothing more than companionship for a brief time, and would like to do it again. We will discuss it at the meeting.

Kathy estimated that 2/3 of the clothing was taken. When we do this again we will concentrate on finding more 2X and 3X sizes as those were the needed items, but the two little ladies had fun finding things. Not much need for large or extra large.

Building 9 at Retsil – With the focus of the YWCA's Smooth Move kits changing from 'start up' kits to cleaning supply kits, we donated several dishes, pans and towels to Building 9 at Retsil for the Veterans in transition. They have given out most of the items and are asking us if we could donate more.

Clubs of the State

GFWC Women's Club of Olympia

Women's Club of Olympia is excited... two great things to share!

The Woman's Club of Olympia **has been awarded \$5,000** by the Thurston County Heritage Grant Program. This was a competitive effort and involved submitting extensive material and information about the Woman's Club. The focus of our request was that the aging wood columns which support the front porch and balcony of the historic building need to be repaired. The building was constructed in 1908 and is on the National Historic Register of Homes. The building was constructed as a Club House and was paid for by the members with money raised from fund raising efforts. Over the years, the building has undergone many repairs, as would be expected with a 100 years plus wood structure, but has also had the additional challenge of extensive repairs after the 2001 Nisqually earthquake. Money to do the repairs and maintenance has always been tight. This Historic Grant is a wonderful gift and is much appreciated by the Club Members.

It is important to note that while our members strive to maintain the historic building, the real emphasis is that this building serves as the focal point for the many Community improvement projects that the Club does. The Abigail Stuart Club House is the site for our regular meetings which raise funds and gather materials for many local charities and organizations. The main reason that the Woman's Club exists is to help make the local Community a better place, particularly for women and children. With the Grant money just awarded, this charitable effort will continue.



On January 19th, the Woman's Club of Olympia hosted a Legislative Panel of female elected officials. Eight women from city, county and state government represented their perspectives and answered questions from the audience. The moderator was from the League of Women Voter's and did an excellent job of flowing between our panelists and the audience.

We started the evening with everyone in attendance reciting our very own civility statement: A Collect for Club Women written by Mary Stewart in 1904. The conversation was very civil, and very well attended; 80 - 100.

The main commonality between the panelists was their bemoaning a lack of funds to do the work they're mandated to perform. Cannabis as revenue came up, but no one seemed impressed with its cash flow in their budgets.

The state budget was lamented, climate change acknowledged, County water issues explained, Paid Family Leave Insurance discussed, educational mandates bemoaned, also talk of ethics and keeping constituents well informed using new technologies.

Panelists all urged women to get involved and run for office. People and panelists mingled afterwards and kept the conversation going. It was a proud night to be a woman.

Gail O'Sullivan
Woman's Club of Olympia

Clubs of the State

GFWC Tacoma

An invitation from GFWC Tacoma...

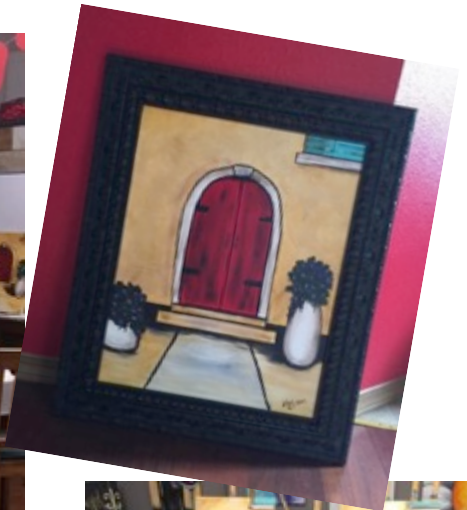
Helping to Plant a Pin Wheel Garden

April is National Child Abuse Prevention Month. This is the GFWC Junior Special Project, Advocates for Children. A specific emphasis during this time is the planting of Pin Wheel Gardens. The familiar blue and silver pin wheels are used across the county as a way of calling attention to the need to create an awareness of child abuse and ways to prevent it in every community.



GFWC Tacoma will be planting this important garden on March 30 and 31, and they have extended an invitation to the clubs and club members of Peninsula District to join them in this important undertaking. Details and location will be forthcoming once they know how many have volunteered. Please call or email either Martha Curwen, [253-752-2599](tel:253-752-2599)... Martha.curwen@gmail.com; or Carlene Garner, [253-752-6080](tel:253-752-6080)... cagarner@mindspring.com to volunteer.

They are looking forward to working and sharing this fun and exciting project together.



The ladies of GFWC Tacoma recently hosted a "Painting Party". In total, 12 members (and one friend), from almost every club within Peninsula District, attended and enjoyed a glass of wine (or so), good friends, and the thrill of creating their own masterpiece, a "Tuscan Doorway"!

Martha Curwen was awarded the "Wig of Shame" when she made a reference to Bob Ross. And I, for one, loved my painting so much I've framed it for my new entryway wall!



Clubs of the State

GFWC Valley Volunteers

Each year, the ladies of Valley Volunteers makes a point of collecting and distributing socks for Step Away from Violence. Typically the socks are collected throughout the entire year and then during December's meeting they are packaged and labeled, and then delivered. Past years we have alternated between Crystal Judson Family Justice Center and the YWCA of Pierce County and historically we have had between 125 and 150 pairs.



At the beginning of 2016, we welcomed a new member, Sandy James. Sandy was really excited by our sock project and for a personal goal, challenged her family to help her collect 70 pairs of socks for her 70th birthday in October... well, collect they did! Sandy's family and friends presented her with over 430 pairs of socks! Combined with our own club donations, we had 588 pairs in all sizes to distribute! We made two large deliveries to Crystal Judson, who shared they will be sharing with the Korean Women's Shelter, and to the YWCA. Great job ladies!



The first of February, Valley Volunteers suffered a great loss with the passing of member, Lillian Pearson. Lillian was the sweetest soul. She created beautiful floral arrangements which we used for various events and sold for our fundraiser at Fall Conference. She also was the imagination behind our Lillian's Look Books which she created by assembling pictures and images of items into 4x6 photo albums which we donated to the nursing homes. They loved having 'picture books' that were small enough to hold in even the weakest of hands. We will all miss Lillian.





OFFICIAL CALL TO

GFWC WASHINGTON STATE 121ST ANNUAL CONVENTION

APRIL 21 – 23, 2017

SHILO INN

RICHLAND, WASHINGTON

**“Walking The Red Carpet ~
Celebrating Our Accomplishments”**



Room Reservations

Shilo Inn
50 Comstock Street
Richland, WA 99352

For Room Reservations call:
1-509-946-4661

Our Group Code is:
GFWC-Washington State
(Ask for ground floor – there are no elevators)
Room Rates per night - Double Queen - \$89 plus tax

Directions to Shilo Inn
From I-182 exist 5b - .5 miles
north adjacent to City Park.

ROOM RESERVATION DEADLINE MARCH 20, 2017

Convention Apparel Guide

Business Meeting – Business Casual
Friday Dinner – Dressy
Saturday Dinner – Dressy – Black and White

**GFWC – WASHINGTON STATE
2017 STATE CONVENTION**

Registration Form
All Clubwomen Welcome

**“Walking The Red Carpet,
Celebrating Our Accomplishments”**

Registration Deadline – April 14, 2017

Name _____
Address _____
City _____ Zip _____
Telephone _____ Cell _____
E-mail address _____
Federation Title _____
Club _____ District _____

Yes, I have a GFWC-WS green name badge and will bring and wear it _____

No, I don't have a green name badge; please make me a name tag _____

(You may order a green name badge at Convention \$12)

Friday – April 21 -	Lunch	\$19.00	_____
	Dinner	\$29.00	_____
Saturday-April 22-	Lunch	\$19.00	_____
	Dinner	\$33.00	_____

I have special dietary need (explain)

Registration	\$35.00	_____
Additional registration		
(If postmarked after 4/14)	\$ 5.00	_____

Total Enclosed _____

Make checks payable to: GFWC-WS State Convention
Send checks and completed form to:
Virginia (Pinkie) Eggleston
27812 M Place
Ocean Park, WA 98640
360-665-5656

Deadline for registration is April 14, 2017

No meal refunds will be made after April 14
Registration fee is non-refundable
One form per person, please.

CONVENTION MENU

Friday – April 21 - Lunch Buffet

Premade Sandwiches (Ham & Cheese,
Chicken Salad, Turkey & Swiss, Roast Beef
& Provolone) on Asiago Hoagie Rolls and
Mini Croissants

Homemade Potato Chips
Mixed Salad Greens with Ranch
Honey Mustard

Balsamic Vinaigrette Dressings
Broccoli and Bacon Salad

Fresh Fruit and Berries Display
Assorted Dessert Bar

Ice Tea with Lemon, Gourmet Coffee

Friday – April 21 – Dinner

Dinner Salad with Dressings
Warm Dinner Rolls with Butter
Herb Crusted Chicken Breast with Basil,
Cream Sauce

Wild Rice Pilaf
Roasted Seasonal Vegetable

Chef's Choice Dessert
Gourmet Coffee

Saturday – April 22 – Lunch Buffet

Home Baked Lasagna
Chicken Parmesan
Tortellini Alfredo
Fresh Seasonal Sautéed Vegetables
Warm Garlic Focaccia Bread
Caesar Salad

Italian Pasta Salad
Fresh Fruit and Berries Display
Assorted Cookies and Cakes
Ice Tea with Lemon, Gourmet Coffee

Saturday – April 22 – Dinner

Northwest Salad (Mixed Salad Greens with
Candied Walnuts, Craisins, NW Dried
Apples, Blue Cheese Crumbles drizzled with
Honey Poppy Seed Dressing)

Rustic Breads with Olive Oil and
Balsamic Vinegar

Medallions of Beef with
Red Wine Demi Glaze
Gorgonzola Au Gratin Potatoes

Fresh Asparagus
Chocolate Torte
Gourmet Coffee

PRE-CONVENTION EVENTS

Registration

Thursday – April 20 – 4 p.m. to 8 p.m.

Friday – April 21 – 8 a.m. to 9 a.m.

Saturday – April 22 – 7:30 a.m. – 8:30 a.m.

Art Room – Yakima Room

Friday – April 21 9 a.m. to Noon – Open for entries

4 p.m. to 5:45 p.m. – Open for viewing and voting

Saturday - April 22 8 a.m. to 9 a.m.- Opening for viewing and voting

10 a.m. to Noon – Closed for Judging

Afternoon Recess to 5:45 p.m. Pick up entries

Pre-Convention Meetings

Thursday – April 20

TBA Past State Presidents

6:00 p.m. Finance Committee Meeting – Board Room

Pinkie Eggleston – GFWC-WS Treasurer

8:30 p.m. All Committee Chairmen Meeting – Board Room

Lela Taylor – GFWC-WS 1st Vice President

9:00 p.m. Gathering – President's Suite – Open to all members

Friday – April 21

6 a.m. to 9 a.m. – Breakfast (for over night guests)

7:30 a.m. Elected Officers Meeting – Breakfast area

8:00 a.m. Computer Link – Breakfast area

Cheryl Holman - President

9:00 a.m. District Presidents Meeting – Board Room

Betty MacMaster – GFWC-WS President Elect

9:45 a.m. Board of Director's Meeting – International III Ballroom
(Elected and Appointed Officers, District Presidents,
GFWC-WS Past Presidents, GFWC-WS Community Service
Programs and Special Projects Chairmen and Committee
members, Chairmen and Members of Standing and Special
Committees, Washington Clubwoman Editor, ESO Director,
President of President Emeritus and Presidents of Member
Clubs)

Tina Bair – GFWC-WS President

Noon President Emeritus Luncheon – International II Ballroom
(All Past and Current District Presidents and Past District
Directors of Junior Clubs)

Sharon Roberts – Presiding

CONVENTION EVENTS

Friday- April 21

2:00 p.m.	Official Opening of Convention
4:30 p.m.	Recess
5:30 p.m.	No Host Bar
6:00 p.m.	Dinner
9:00 p.m.	Social in President's Suite

Saturday – April 22

9:30 a.m.	Business Session Reconvenes
	Memorial Service – Betty MacMaster
12:00 p.m.	Lunch
2:00 p.m.	Business Session Reconvenes
4:00 p.m.	Recess
4:15 p.m.	ESO – Jeanette Jester Study Director
5:30 p.m.	No Host Bar
6:00 p.m.	Banquet
9:00 p.m.	Reception honoring all Club Winners

Sunday – April 23

9:15 a.m.	Morning Inspiration – Donna Snellgrove
9:45 a.m.	Business Session Reconvenes
11:00 a.m.	Adjournment



Please bring to State Convention items for St. Jude's Children's Research Hospital.

Very popular items that are always in high demand include:

Fisher Price Little People	Action Figures (Spiderman, Hulk and Batman)
Lego Bionicles	Sesame Street Items
Strawberry Shortcake (small dolls)	Carebears (not stuffed)
Various Card Games	Various Board Games
Coloring Books	Crayola Crayons (8 and 16 count only)
Crayola Washable Markers	Construction Paper
Hot Wheels	Barbie and Clothes

Gift Cards such as: Target, Wal-Mart, Toys R US, Visa, Starbucks, and McDonald's

Please Remember – ***New Items Only***

A more complete list of needs can be found on the GFWC-WS Website.

CONVENTION SPEAKERS



Our Friday night speaker is Emily Durr. Emily is a nineteen-year-old freshman at Washington State University. A recent graduate from Bellarmine Preparatory School in Tacoma, Washington, Emily continues her high school academic performance with a 3.74 grade point average her first college semester. This put her in the top 3% of college freshmen. She's been nominated to the Washington State University Chapter of the National Society of Collegiate Scholars for Scholarship, Leadership, and Service. Along with academics, she is a member of the Washington State University Women's Lacrosse team as their goalie, and is an active member of Alpha Delta Pi Sorority, leading as a Big Diamond Sister.

Emily was born at Joint Base Lewis McChord in 1998. The daughter of United States Army Command Sergeant Major (Retired) Patrick Durr and Tami (Ragan) Durr, also a WSU alumna, she's enjoyed much travel and many experiences over her lifetime.

Recently, Emily was crowned International Junior Miss Washington Teen. Her interest in the Pageant Scholarship program is somewhat new. The International Junior Miss Program offers the type of interaction with other young women, opportunity, and activities, Emily is looking for. In July, she will represent this great state in the upcoming international finals in Nashville, Tennessee.

As our state queen, Emily has taken on the challenge of raising awareness for the Juvenile Diabetes Research Fund (JDRF) in an effort to find a cure for Type 1 Diabetes and will walk with her team at the Annual JDRF Walk for a Cure at Cheney Stadium, located in Tacoma.

Emily has no plan to slow down. Upon completion of her undergraduate degrees in Psychology and Criminal Justice, she will continue her education before eventually enrolling into the Federal Bureau of Investigation Academy to continue her work in helping others as a criminal profiler with law enforcement.

Saturday night, our guest speaker will be Ellie Alexander. Ellie writes the bestselling Bakeshop Mystery series for St. Martin's Press, set in the Shakespearean town of Ashland, Oregon and featuring a romantic, artisan pastry chef, Juliet Montague Capshaw. She also pens the Pacific Northwest Mysteries, written under the name, Kate Dyer-Seeley.

Ellie is a Pacific Northwest native who spends ample time testing pastry recipes in her home kitchen or at one of the many famed coffeehouses nearby. When she's not coated in flour, you'll find her outside exploring hiking trails and trying to burn off calories consumed in the name of *research*.

You can find her online at:

Facebook: <https://www.facebook.com/elliealexandrauthor/>

Twitter: <https://twitter.com/BakeshopMystery>

Instagram: https://www.instagram.com/ellie_alexander/



Special FUNdraising Opportunities

Courtesy of our Saturday night speaker, Ellie, we will have three additional FUNdraising opportunities! Ellie has graciously donated all three and all monies raised will benefit our State Treasury.



1st: CAMEO FUNdraiser

Ellie writes the Bakeshop Mysteries for St. Martin's Press and the Pacific Northwest Mysteries for Kensington Publishing (under Kate Dyer-Seeley). She's auctioning off a cameo book appearance. This is your chance to suggest a character's name in her one of her next novels. If you win she'll work just about any name you suggest into the story (per her editor's guidelines no foul or crass names can be accepted). Get creative. It can be your dog's name, your kids or your best friend. Better yet, she'll pen-in your arch-enemy or ex. You decide. Fair warning this is a mystery series so the character you name may meet an untimely and horrid death soon after their introduction. You'll also receive a signed copy of the manuscript before publication.

2nd:

A raffle of the complete set of Ellie's Bakeshop Mysteries. All books will be signed by Ellie.

BAKESHOP MYSTERY Series:

Main Character: Jules Capshaw, Employee at Family Torte Bakeshop, Small Town, Oregon

[Meet Your Baker](#) '14

[A Batter of Life and Death](#) '15

[On Thin Icing](#) '15

[Caught Bread Handed](#) '16

[Fudge & Jury](#) '17



3rd:

A raffle of the complete set of the Pacific Northwest Mysteries.

PACIFIC NORTHWEST MYSTERY Series:

Main Character: Meg Reed, Journalist, Portland, Oregon

[Scene of the Climb](#) '14

[Slayed on the Slopes](#) '15

[Silenced in the Surf](#) '16

[First Degree Mudder](#) '16





From: Chris Herzog, CA State Host Chairman, GFWC 2017 Convention

You're Invited!
To the GFWC 2017 Annual International Convention It's
"Our Time To Shine" on June 22 – June 26, 2017

- We have the Place: J.W. Marriott Desert Springs Resort & Spa
74855 Country Club Dr.,
Palm Desert, CA 92260
(760) 341-2211
www.marriott.com

This desert paradise is no mirage. GFWC California federation invites you to an elegant evening of music, entertainment, a sumptuous 3 course dinner and plenty of federation camaraderie.

An "Evening at the Oasis" will kick off the GFWC 2017 International Annual Convention on June 23, 2017, Friday California State Night, 7:30 – 10:00 p.m.

- We Have the Food...
- We have the music...
- We have the fun....

Do we have you?

More details are available now via CFWC "Quick Bytes" Links, www.CFWC.org.
The Call to Convention will be available in March/April issue of GFWC Clubwoman Magazine.

Look for notices in the GFWC "News & Notes", and on GFWC.org.
Chris Herzog, Calif. State Host Chairman cmherzog@cox.net

Start making your plans – Palm Springs or Bust!





GENERAL FEDERATION of WOMEN'S CLUBS

The Washington Clubwoman

is published quarterly by
Kimberly Skagen, Editor

The Washington Clubwoman

977 SE Triviere TRL
Port Orchard, WA 98367

Send submissions to:

WashingtonClubwoman@yahoo.com

Your 2016-2018 GFWC-WS Executive Committee:

President:

Tina Bair

President-elect:

Betty MacMaster

First Vice-President:

Lela Taylor

Second Vice-President:

Ginger Bowman-Rape

Secretary:

Kimberly Skagen

Treasurer:

Pinkie Eggleston

Columbia District President:

Pinkie Eggleston

King County District President:

Cindy Jorgensen

Peninsula District President:

Dorothy Crowder

Northeastern District President:

Bonnie Rail

North Central District President:

Margaret Schiffner

Attending in advisory capacity:

Parliamentary Advisor:

Bonnie Walden

Financial Secretary:

Laura Guerra

Endowment Trustee:

Jeanette Jester

Got something to share?

send it for the newsletter:

WashingtonClubwoman@yahoo.com

or the website:

news4gfwcws@earthlink.net



DATES TO REMEMBER

Deadline for next

Washington Clubwoman

May 1st

District Spring Conferences

March 2017

GFWC-WS Spring Convention

Shilo Inn, Richland

April 20-23

GFWC International Convention

Palm Springs, CA

June 23-26

GFWC WSR Conference

Helena, MT

September 7-10

GFWC-WS Fall Board

Howard Johnson, Yakima

September 22-24



Proposed Amendments to the GFWC-WS Bylaws as proposed by the Ad Hoc Committee

ARTICLE IV – OFFICERS AND DUTIES

Section 4.6 Duties of Elected & Appointed Officers.

Currently reads:

- C. **First Vice-President.** The First Vice-President shall assume the duties of president in the absence of both the President and President-elect, and shall:
1. Serve as Dean of Community Service Programs and Special Projects Chairmen and assume other duties as assigned by the President.
 2. Be a member of the Strategic Planning Committee and a conference member of the Budget & Finance Committee.

Amend by striking the word First, and striking the words: Dean of Community Service Programs and Special Projects Chairmen and inserting, Counselor to the Club President after the word: as.

If adopted will read:

- C. **Vice-President.** The Vice-President shall assume the duties of president in the absence of both the President and President-elect, and shall:
1. Serve as Counselor to the Club Presidents and assume other duties as assigned by the President.
 2. Be a member of the Strategic Planning Committee and a conference member of the Budget & Finance Committee.

Currently reads:

- D. **Second Vice-President.** The Second Vice-President shall serve as Chairman of the Membership Committee, and shall:
1. Promote membership including orientation and retention of members.
 2. Provide application forms, determine eligibility of new clubs, approve bylaws of such clubs and process applications.
 3. Send notification in writing of acceptance of new clubs to: the Club, the District President, and the State President.
 4. Advise the Credentials & Elections Chairman of new club applications received after January 1 that are eligible to receive convention voting credentials.
 5. In cooperation with the President, offer assistance to those District Presidents whose districts do not meet minimum requirements for GFWC-WS Districts as outlined in Section 1.3A of these bylaws.
 6. Present to the Executive Committee for action the requested transference of status by clubs to other districts when district minimum requirements could not be met within the allowed time.
 7. Be a member of the Strategic Planning Committee and a conference member of the Budget & Finance Committee.

Amend by striking the entire Section D and re-lettering the remaining sections.

Currently read:

- F. **Treasurer.** The Treasurer shall be bonded, and shall:
1. Chair the Budget & Finance Committee and prepare an annual budget, along with the Financial Secretary, for consideration of the Budget & Finance Committee.
 2. Affix her signature along with that of the Financial Secretary on the accounts signature card with only one signature required, so in her absence, the Financial Secretary may sign checks.
 3. Collect dues, fees, and donations other than Endowment Fund donations, from clubs belonging to GFWC-WS.
 4. Be responsible for all monies deposited in a financial institution, advising the Financial Secretary, so accounts may be properly credited.
 5. Notify clubs with unpaid dues of the November 1 deadline, prior to November 15.
 6. Pay all bills after receipt of vouchers from the Financial Secretary.
 7. Be a member of the Strategic Planning Committee and the *Washington Clubwoman* Board of Management.
 8. Maintain the official GFWC-WS membership roster of active clubs and their paid members, updating it and the GFWC database (x-catalyst) and e-mailing the updated roster to the President and *Washington Clubwoman* Editor as they may require.
 9. Send lists of clubs entitled to voting credentials to Chairman of Credentials and Elections Committee by February 1 of each year.
 10. Notify any district that does not meet the minimum requirement of three per capita dues-paying clubs no later than February 1, with a copy to Executive Committee members.
 11. Send a list of clubs eligible for Awards to Community Service Program and Special Projects chairmen by February 1 each year, with a copy to Executive Committee members.
 12. Present records by August 1 of each year of all accounts, including those of the Financial Secretary and Endowment Trustee, for financial review by a qualified person or firm approved by the Budget & Finance Committee.
 13. After completion of her term, transfer all funds and financial records of the Federation in her custody to her successor.

Amend by substituting a new sub-section 9:

9. Prepare voting credentials for the members and clubs entitled to vote at the upcoming State Convention and forward as directed by the President.

If adopted will read:

- F. **Treasurer.** The Treasurer shall be bonded, and shall:
1. Chair the Budget & Finance Committee and prepare an annual budget, along with the Financial Secretary, for consideration of the Budget & Finance Committee.

2. Affix her signature along with that of the Financial Secretary on the accounts signature card with only one signature required, so in her absence, the Financial Secretary may sign checks.
3. Collect dues, fees, and donations other than Endowment Fund donations, from clubs belonging to GFWC-WS.
4. Be responsible for all monies deposited in a financial institution, advising the Financial Secretary, so accounts may be properly credited.
5. Notify clubs with unpaid dues of the November 1 deadline, prior to November 15.
6. Pay all bills after receipt of vouchers from the Financial Secretary.
7. Be a member of the Strategic Planning Committee and the *Washington Clubwoman* Board of Management.
8. Maintain the official GFWC-WS membership roster of active clubs and their paid members, updating it and the GFWC database (x-catalyst) and e-mailing the updated roster to the President and *Washington Clubwoman* Editor as they may require.
9. Prepare voting credentials for the members and clubs entitled to vote at the upcoming State Convention and forward as directed by the President.
10. Notify any district that does not meet the minimum requirement of three per capita dues-paying clubs no later than February 1, with a copy to Executive Committee members.
11. Send a list of clubs eligible for Awards to Community Service Program and Special Projects chairmen by February 1 each year, with a copy to Executive Committee members.
12. Present records by August 1 of each year of all accounts, including those of the Financial Secretary and Endowment Trustee, for financial review by a qualified person or firm approved by the Budget & Finance Committee.
13. After completion of her term, transfer all funds and financial records of the Federation in her custody to her successor.

ARTICLE VIII COMMITTEES

Section 8.1

Currently reads:

- A. **Budget & Finance Committee.** The Budget & Finance Committee shall consist of the current GFWC-WS Treasurer who shall be chairman, and the President, President-elect, the immediate Past President and immediate past Treasurer, Financial Secretary and Endowment Trustee. The GFWC-WS First Vice-President and Second Vice-President shall be conference members without vote. This committee shall:
 1. Consider the annual budget prepared by the GFWC-WS Treasurer and Financial Secretary and submit a proposed budget to the Board of Directors for approval.
 2. Recommend to the Executive Committee the depository and investment for all monies held by GFWC-WS, including the Endowment Fund.
 3. Approve a qualified person or firm for the annual financial review.
 4. Recommend stipends for any paid personnel with final approval by the Board of Directors.
 5. Send copies of committee minutes to Executive Committee members not serving on the Budget & Finance Committee

Amend by striking in the first paragraph, the words: “First”, following the letters” GFWC-WS; “and Second Vice-President”, following the word Vice-President; and the letter “s” in the word members; and by adding the letter “a” before the word “conference”.

If amended will read:

- A. **Budget & Finance Committee.** The Budget & Finance Committee shall consist of the current GFWC-WS Treasurer who shall be chairman, and the President, President-elect, the immediate Past President and immediate past Treasurer, Financial Secretary and Endowment Trustee. The GFWC-WS Vice-President shall be a conference member without vote. This committee shall:
1. Consider the annual budget prepared by the GFWC-WS Treasurer and Financial Secretary and submit a proposed budget to the Board of Directors for approval.
 2. Recommend to the Executive Committee the depository and investment for all monies held by GFWC-WS, including the Endowment Fund.
 3. Approve a qualified person or firm for the annual financial review.
 4. Recommend stipends for any paid personnel with final approval by the Board of Directors.
 5. Send copies of committee minutes to Executive Committee members not serving on the Budget & Finance Committee.

Currently reads:

- H. **Leadership Committee.** The Leadership Committee shall consist of a chairman and two members, one who shall be the LEADS Program/Contest Chairman. It shall be the duty of this committee to develop programs to promote leadership on all levels of GFWC-WS. It shall also be responsible for the promotion of the GFWC-LEADS program, encouraging GFWC-WS members to submit LEADS application forms for judging in accordance with GFWC criteria.

Amend by substituting a new section to read:

- H. **Leadership Committee.** The Leadership Committee shall be composed of a Chairman appointed by the President and a member from each district appointed by the district president. It shall be the duty of this committee to actively promote and encourage leadership at all levels of GFWC. The Chairman shall oversee the GFWC LEADS Program, including the recruitment of candidates for the annual GFWC training.

If adopted will read:

- Leadership Committee.** The Leadership Committee shall be composed of a Chairman appointed by the President and a member from each district appointed by the district president. It shall be the duty of this committee to actively promote and encourage leadership at all levels of GFWC. The Chairman shall oversee the GFWC LEADS Program, including the recruitment of candidates for the annual GFWC training.

Currently reads:

- I. **Membership Committee.** The Membership Committee shall be chaired by the Second Vice-President and shall consist of one member from each District appointed by GFWC-WS President in consultation with each District President. It shall be the duty of this committee to promote membership on all levels of GFWC-WS.

Amend by substituting a new section to read:

- I. **Membership Committee.** The Membership Committee shall be composed of a Chairman appointed by the President and a member from each district appointed by the district president. It shall be the duty of this committee to promote membership recruitment, retention and renewal at all levels of GFWC-WS.

If adopted will read:

- I. **Membership Committee.** The Membership Committee shall be composed of a Chairman appointed by the President and a member from each district appointed by the district president. It shall be the duty of this committee to promote membership recruitment, retention and renewal at all levels of GFWC-WS.

Proviso: If adopted, these amendments will not take effect until the close of the next annual convention in 2018. No election for the eliminated office will occur at that convention, and the office will cease to exist at the close of that convention.