



# The Washington Club Woman

*S.H.O.E.S... Serving Has Opportunities Everyone Shares*

Spring 2018  
Vol. 101, No. 4

## 122nd GFWC Washington State Convention

**Our 122nd GFWC Washington State Convention is just around the corner!** Installation year conventions are always a special time for our state and members and this year is no exception! We are excited to be returning to the Red Lion in Olympia for a fun-filled 4 days of arts, meetings, elections, and fundraising! Make your room reservations by March 20 and return your convention registration and payment by April 11th.

Our special guest will be GFWC 2nd Vice President, Debra "Deb" Strahanoski. She will assist with our Installation Ceremony Saturday night and participate in our meetings and meals the rest of the weekend. Please be sure to introduce yourself and get to know her while she's here!



### Deb's Bio

GFWC 2nd Vice President, Debra "Deb" Strahanoski has been a dedicated GFWC Illinois clubwoman for 28 years and is highly regarded as a mentor to many.

Deb's boundless energy has been apparent during her Federation journey; she has served her clubs and district in various roles. She served the GFWC Illinois Board of Directors as State Project Chairman, Director of Junior Clubs 2000-2002, President Elect/Dean of Chairmen and GFWC Illinois President 2008- 2010, and currently GFWC Illinois Protocol Chairman.

Her GFWC leadership positions have included Home Life Chairman, Membership Chairman, Community Improvement Program Award Chairman, Treasurer, and Secretary and helped ignite The Campaign for the Future as chairman of the Capital Campaign Committee.

Deb is a highly respected volunteer and leader with GFWC and in her community. She has served Easter Seals and Prevent Child Abuse Illinois on both regional and state levels, and has been honored with the coveted Friends of Children Award by PCA Illinois.

Since 2005, Deb has been employed with Easter Seals as Development Manager, managing annual fundraising activities and events for the Joliet Region. She credits much of her professional success to all she has garnered through Federation.

Deb assists her husband Bill in his public accounting office, which they have owned since 1984. They have two children and one grandchild. Her visionary leadership, extensive experience and infectious enthusiasm have inspired new and veteran members alike.

# Thoughts from the sole...



Dear Washington State Clubwomen:

Where have the last two years gone? It's hard to believe that 2016-2018 administration is drawing to a close and that my term as your GFWC Washington State President will soon be history. With having the theme "Serving Has Opportunities Everyone Shares", our communities have become the beneficiaries of your hard work. The contributions each of you have done within your communities have been outstanding. You all deserve a pat on the back and we will celebrate all those wonderful accomplishments during GFWC Washington State Convention. I hope that everyone has marked their calendars to join other clubwomen in Olympia at the Red Lion Hotel beginning April 19 with special meetings and with the Opening Ceremony on April 20 at 10:15 a.m.

Plans are under way to make this a very special and meaningful convention that you won't want to miss. Our Friday luncheon speaker will be Jim Perkins who is a member of AARP and will speak to us about Scams and Fraud and how we can protect ourselves from these groups. You won't want to miss this presentation.

Come help us celebrate 90 years of cooperation of Federation Forest State Park with the Washington State Parks Service and GFWC Washington State. We have invited several past Rangers of Federation Forest and members of the Washington State Park and Recreation Commission who have been working on the remodel of the Interpretive Center.

Our special guest for the week-end will be GFWC Second Vice President, Deb Strahanoski. Deb will bring her enthusiasm to our meeting. As you can see by her bio in this issue, she has many years of experience with GFWC and her own club in Illinois. She will be our speaker on Friday evening. She will also be our installing officer on Saturday night. Let's make her feel at home with us during her stay.

Along with our speakers, we can't forget about the many accomplishments that you have done in your communities. Throughout the week-end we will have presentation awards by our Community Service Program and Advancement Area Chairmen. Come and help celebrate all of our accomplishments.

I am looking forward to welcoming all of you to our 122nd GFWC Washington State Convention in Olympia.



Love, in Federation,  
Tina Bair

GFWC-Washington State  
President 2016-18

*Jeanne Syverson*  
*past GFWC-WSR, GFWC-WS President*



*Jeanne Syverson passed away January 24, 2018 in Tempe, AZ. She is survived by her twin sister Joanne Virgillo, of Kent, WA, her three children Barbara Lundberg (Mark) of Yakima, WA, Nancy Syverson of Kent, WA and Eric Syverson of Bellevue, WA. She is also survived by three grandsons, Joshua Lundberg of Yakima, WA, Dustin Umemoto of Maple Valley, WA, Dylan Umemoto of Federal Way, WA, and a very special granddaughter, Isabella Syverson of Bellevue, WA. Jeanne is also survived by two great-granddaughters, Layton and Arletta Umemoto of Maple Valley. She was preceded in death by her parents William and Virginia Verran of Wapato and her grandson Tyler Lundberg of Yakima.*

*Jeanne was born February 11, 1931 along with her identical twin sister, Joanne. She graduated from Wapato High School in 1949 and married Norris Syverson in 1953 where they owned and operated Syverson's Tax Service and Western Lumber in Wapato, WA. Norris preceded her in death in 2004.*

*Jeanne was active in her community while the girls were growing up. She was involved with Campfire Girls and Rainbow Girls serving as Mother Advisor. She was a member of the American Legion Auxiliary in Wapato serving several years in the Girls State program, a member of the Seattle Children's Hospital Guild for many years and a member of the Wapato Community Presbyterian Church.*

*Jeanne was involved with the GFWC (General Federation of Women's Club). She served in many leadership roles which included all the offices of her local club, including President. Jeanne was the State of Washington President in 1988-1990 and served as President of the Western States Region of the GFWC.*

*Memorial Services for Jeanne were held Sunday, February 18, 2018 at 1:00 p.m. at Valley Hills Funeral Home Chapel, 2600 Business Lane, Yakima, WA (Terrace Heights).*

*In lieu of flowers donations can be made to Seattle Children's Hospital (uncompensated care), GFWC Endowment Fund or the charity of your choice.*

# Scholarship Committee

---

Happy New Year to all! We have lots to be happy about and lots to report about.

I hope the clubs in Washington State took on the challenge of donating funds to the Educational Scholarship Fund during 2017. I am also hopeful that individuals felt inspired to donate as well.

Thirdly, we can all hope that the markets have done well & that our Funds have grown so that this Spring we will have sufficient funds to award to our scholarship recipients.



Which brings me to the topic of submitting your scholarship applications to the GFWC-WS Scholarship Committee. If your club gives an educational scholarship, please submit your candidate for consideration for a State Scholarship as well.

However... you need not award a scholarship from your club in order to submit a candidate for a state scholarship. You may give copies of our State Educational Scholarship Application Form to your area high schools and then retrieve them back by the first part of February, in order to make your selection to forward no later than March 1, to the state Scholarship Chairman, Linda Butcher.

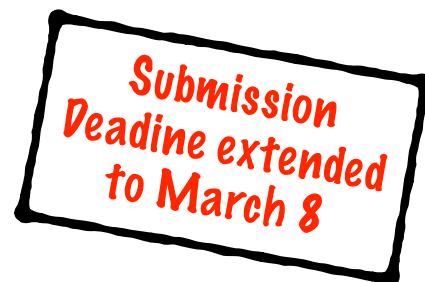
Please review the GFWC-WS Educational Scholarship pages 61 through 70 for complete details, dates and deadlines. (Hopefully you included your scholarship activities in your Education Community Service Program award entry, which you sent to Sally Gill, Education Chairman)

Your Educational Scholarship Application needs to be submitted to the GFW-WS Scholarship Committee, C/O Linda Butcher, Scholarship Committee Chairman, 5754 Sealawn Ave NE, Tacoma WA 98422.

Your Scholarship Committee is looking forward to receiving and reviewing all applications submitted for consideration. We are hopeful to have candidates and funds to match, so we can celebrate the wonderful experience of helping young women in Washington State move forward to accomplish their educational goals.

Thank you for doing your part! We look forward to celebrating our successes at our Spring Convention in April, 2018.

Living the Volunteer Spirit,  
Linda Butcher, Janice Orr, Joyce Lewis





# Outstanding Club Woman

Its time again to honor a member of your club who has done outstanding work this past year. Each year GFWC Washington State honors an Outstanding Club Woman for her volunteer efforts and to pay tribute to that person who exemplifies the Federation philosophy of community improvement through club work.

Each club may select one outstanding member to honor. A report describing that member's activities from January 1 to December 31 of the previous year should be submitted to the GFWC-Washington State President-Elect (Betty MacMaster) postmarked on or before March 1 of the current year.

## Three copies of the report, comprised of the following, must be submitted for judging purposes:

Cover page must include:

1. Candidate's Name
2. Club
3. District
4. Club President's Signature

**Submission  
Deadline extended  
to March 8**

## Narrative, limited to two typed pages, should include:

1. Brief description of Federation activities prior to last year
2. Detailed description of current club activities
3. Brief description of District, State and GFWC activities
4. Brief description of other community involvement
5. Brief description of family and professional life

**Eligibility:** Only dues paying members of GFWC-Washington State Clubs will be considered. Current elected GFWC-Washington State Officers and past GFWC-Washington State Presidents will not be eligible for consideration.

Betty MacMaster GFWC-WS President Elect



*Don't forget...  
March is Women's History  
Month with International  
Women's Day specifically  
falling on Thursday, March 8.*

*Recognize yourselves, your  
fellow clubwomen, sisters,  
mothers, daughters, any and  
all women for the strong  
amazing people we are!*

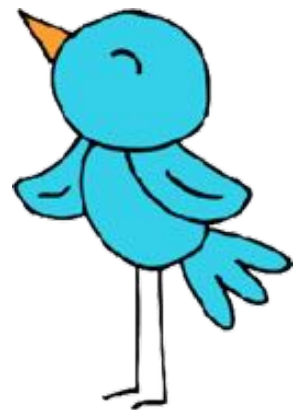
# District Conferences

---



## Looking for District Information??

Dates, Pictures, current Call to Conference  
and registration for most events.  
All of this and more can be found on  
our State website!



## District Events

Betty says:  
Still room for volunteers!  
Contact me if you're interested  
[macmaster@harbornet.com](mailto:macmaster@harbornet.com)  
or phone (253-952-6580)





## Hear Ye, Hear Ye! GFWC-Washington State Clubs!

Greetings Members!

GFWC-WS 2018 Spring Convention is around the corner and this 2016 - 2018 Administration wants to ramp-up the FUN in FUNdraising.

We are asking all clubs to help with fundraising by donating a basket, a vase or any container that will hold your item(s)...**BUT** this time, we want to *challenge* clubs to come up with the *most* creative, or beautiful or fun-filled basket! It is your choice of content(s), your idea, your creation! Have fun at your meeting by working together by brain storming, tossing out ideas then putting it together! Also, please attach your club name and a list of the contents/value in or on your basket.

Fundraising of the baskets will be **SILENT AUCTION**....Here's the FUN part! The basket with the highest bid will be the winner and deemed most popular because of its contents or that it was beautiful or that it was filled with fun stuff. The club that entered the winning item will receive the bragging rights of **WINNING THE BLUE RIBBON and a PARTY HORN TO TOOT!!!!** *We will all have fun tooting along with you!*

We will also have our traditional **50/50 raffle!!!!**

All fundraising proceeds will go to our WS treasurer to cover convention expenses and to continue informational, educational and communication training.

Thank you for your support and making our job as the GFWC-WS FUNdraiser chairmen during this 2016-2018 administration a pleasure. It was an honor to work with all of you. We hope you had fun...we did!!

Nardine Sandberg  
GFWC-WS FUNdraising Chairman  
360-352-0848 (h)  
253-273-1114 (c)

FUNdraiser Committee Members:  
Gail Crump and Cassy Faulkner





# Clubs of our State

---

## GFWC-Chewelah

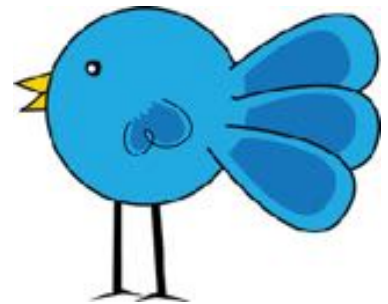
GFWC Chewelah has been enjoying a January thaw...complete with sunny days and slushy roadways. Ending soon we know.

Pictured is Sally Paramore, one of our new members, with our November red white and blue display at Chewelah Libraries of Stevens County. The books featured highlighted women in our military.

We are planning for an appearance of spring with our annual Mothers Day patio bowl fundraiser. Hope springs eternal!



## GFWC-Chambers Bay



Beautiful day to clean the park and beach at Titlow! Thanks Jodi for organizing a crew.

Pictured: Terese Jackson, Linda Olive, Joan McLean, Sally Larson, and Beth Juvik. (Hubby name not supplied!)



# Clubs of our State

## GFWC-BATTLE GROUND

### More comfort pillows!

Amber Doede, R.N. at Legacy Breast Health Center accepts another big bag of comfort pillows for patients. Club President Johanna Hyatt and Club Treasurer Anne Erickson delivered the pillows to the center at Salmon Creek Legacy Hospital.



### February Meeting has double-heart goal

When GFWC Battle Ground gathered on February 8th, all members in attendance wore red with the goal of showing the importance of Heart Health Month. In addition heart health awareness posters from The Heart Truth were distributed throughout their community. GFWC International partners with organizations that promote heart health. The meeting was held at a preschool whose students' artwork unknowingly added background decor.

February is also known as the love month. The second goal of the meeting was to show concern to disadvantaged teens and homeless women who lack feminine products. Half a dozen banker's boxes were filled with a variety of sizes and kinds of items. These were then given to the Clark County organizer of "Every 28 Days," a newly-formed group of caring women who have set up a distribution system that includes school district resource centers, food banks and other agencies who serve the needy. This project was in response to a guest speaker's plea for this "not often thought of" need.





# Clubs of our State

## GFWC-CAMAS-WASHOUGAL

GFWC Camas-Washougal held a Women's Heart Health awareness during "Camas First Friday" this past week. On the first Friday of each month the town of Camas, Washington celebrates with a town event. For some events they actually close off the downtown streets to car traffic. Making the downtown area walk able.

February's theme was "Celebrating Women". A perfect opportunity for us to help educate women of Heart Health. The venue was Journey Church, Camas Washington.

We had so much fun sharing Heart Health and GFWC with everyone. It turned into a mini membership drive. We obtained 9 perspective members information. They have been invited to attend our February meeting at the home of Club President Carol Styles.

Attending the event to share the GFWC Mission of Community Service: President - Carol Styles, Vice President - Pat Suggs, Susan Bennett, Hope Gilson, Alma Ladd, and Jeanette Jester

We hope you enjoy viewing our event.  
Susan Bennett



# GFWC Style Project Runway

## Conservation Challenge



*Every State is invited to participate in the Conservation Challenge to be held at the 2018 GFWC Annual Convention in St. Louis, Missouri - June 23-26, 2018*

### **The Challenge:**

To create a complete outfit using reusable Tote Bags. NOT plastic grocery bags but the reusable 'fabric' bags that are sold at Home Goods, TJ Maxx, Marshalls, Macy's, grocery stores, etc.

### **Time Limit:**

You will have until the 2018 GFWC Annual Convention to create your state's entry. You should use bags that club members already own and have used; you should try not to purchase new ones just for this purpose.

### **Rules:**

- (1) Your fashion entry must be a complete outfit; i.e. dress, top and skirt or top and pants, jumpsuit.
- (2) Either fabric reusable bags or plastic / tyvek reusable bags can be used; you CANNOT use plastic grocery bags.
- (3) Entry must be made of at least 80% tote bags; other fabric and some clothing may be used, but the entire outfit must be at least 80% tote bags.
- (4) Entry does NOT have to be sewn; any way you keep it together acceptable. But beware of possible wardrobe malfunction!
- (5) You must provide a volunteer model for your outfit.
- (6) Outfit can be accessorized; but use accessories wisely!
- (7) Entries should be STATE entries. ONE PER STATE. NO individual entries or club entries will be accepted. Participating states must register their intention to participate by April 1, 2018.

*Design and build your club entries now and plan to bring them to our WS Spring Convention. We will vote and select one entry that will be submitted to GFWC in June. Additional information will be made available by Lynn Cline, Contest Chairman*



# Candidates for Office

---

## **Betty MacMaster** **GFWC Washington State President**

GFWC King County District is pleased to endorse Betty MacMaster for the office of GFWC-WS President. Betty has served as both Club and District president; was GFWC-WS Clubwoman of the Year in 2001; and is a 2004 LEADS graduate, representing our state.

Betty has served the state, district, and club in numerous chairmanships. She is currently serving as GFWC-WS President Elect, as well as having served as GFWC-WS Administrative Secretary, Leadership chairman, Conservation, Home Life and CIP on the State Board. District has benefited from her leadership with fundraising and as Leadership Chairman. Her club has enjoyed her dedication to Home Life, Leadership and chair of their Relay for Life team for the past eight years.



Betty believes in Federation and all it can accomplish in our communities. She works hard to develop projects and see them through to a successful conclusion. With Betty's leadership and experience in a variety of chairmanships, she is a natural to lead our district presidents in the coming two years.

Her abilities are put to use by other organizations as well. She has worked on the Boeing Employee Community Fund; and was a United Way special projects team member. For many years she was a dedicated volunteer at her daughter's school. When given a task, Betty jumps in and gets things done, leading to a successful outcome.

Her leadership abilities, her dedication to GFWC and her enthusiasm for service to our communities will make Betty an excellent officer and leader. Betty has consented to have her name placed in nomination, and King County District is excited to endorse Betty MacMaster for the office of GFWC-WS President for the 2018-2020 Administration.

Sincerely,  
Cindy Jorgensen, President  
GFWC-WS King County District



# Candidates for Office

---

## **Lela Taylor, candidate GFWC Washington State President-Elect**

To Whom it May Concern:

GFWC-WS Northeastern District proudly endorses Lela J. Taylor for the 2018-2020 office of GFWC-WS President-Elect. Lela has been a member of the state Executive committee since 2010, serving as GFWC-WS Treasurer 2010-12; as NE District President 2012-14; as GFWC-WS Second Vice President 2014-16, and is currently serving as GFWC-WS 1st Vice President.

She has been a proud GFWC member since GFWC Springdale Women's Club was chartered in 2003. During her twenty-six years as an active Member of the club, she has held its offices of President, Vice-President, Secretary, and Treasurer. She has served numerous other clubs and associations in presiding positions throughout the years, including rodeo associations, Business and Professional Women's Association, Soroptomists of Chewelah, and Chamber of Commerce.

Lela also belongs to GFWC Chewelah Women's Club, GFWC O.T.H.E.R Club and GFWC Computer Link, holding the office of Vice President. And just recently was elected President in the newly reorganized GFWC Springdale, now separate from the Springdale Women's Club.

Lela is well qualified to be the new GFWC-WS President-Elect and the responsibilities of that office. As a past presiding officer of her local Chamber of Commerce during its merger with another Chamber, she was the driving force that increased its membership from 5 active members to over 30 active members and an additional 30 associate members. She brings her talents and passion for working with the members and various committees to her GFWC membership.

Her work experience includes service as an Executive Secretary for a large hotel chain located in Southern California, directing staff and planning functions held by the adjoining Golf and Country Club. She also worked with various Federal Judges with Bureau of Hearings and Appeals, Social Security Administration, traveling throughout the United States, setting up the court itineraries, arranging for interpreters when necessary and scheduling flights, conference rooms and hotel accommodations for court business. She later owned her own insurance agency being certified in all lines of insurance, held real estate licenses and was licensed as a general contractor before the death of their son in 2000 from cancer. For over 30 years, she managed and maintained the many transactions of various family-owned businesses consisting of a logging company, real estate development projects and is currently managing six rental units owned by them.

She is a member and active volunteer of the Springdale Community Church, and is also a photographer, published author and artist. Lela and husband Jerry Taylor have a blended family consisting of three girls, one boy and a 'crew of eleven cats, five dogs, four horses, and two goats.

With obvious pride, we ask your support to elect our candidate, Lela J. Taylor, as GFWC-WS President-Elect.

In Federation,  
Bonnie Rail  
GFWC-WS Northeastern District President



# Candidates for Office

---

## **Dorothy Crowder, candidate GFWC Washington State Vice President**

GFWC-WS Nominating Committee and GFWC-WS President  
Tina Bair

GFWC-WS Peninsula District is pleased to endorse Dorothy Crowder for the office of GFWC-WS 1<sup>st</sup> Vice President for the 2018-2020 administration.

Dorothy has proven herself to be a great asset to our state and to GFWC since joining in 2007. She has held positions at club, district and state levels. Active in GFWC Capital Woman's Club, she has held the office of president and secretary, as well as serving as, membership chairman and fundraising chairman. In Peninsula District she is currently serving as president and has served as both the Arts chairman and Communications/Public Relations chairman. At the state level, she has held the position of Communications/Public Relations chairman and is currently Home Life chairman.



Dorothy worked for 28 years in public school districts in Louisiana, California and Washington as a para-educator. She specialized in working in special education and during her last ten years she worked with at risk junior high students. She has coached Special Olympics in each of the above named states and was primarily responsible for getting athletes to events. At times she would be responsible for up to 15 athletes during a weekend.

Knowing the importance of volunteerism, Dorothy has been a volunteer in some capacity for most of her adult life. In addition to GFWC and Special Olympic, she has worked with the Girl Scouts, church choirs, and 4-H.

GFWC-WS Peninsula District is very proud to endorse Dorothy Crowder as 1<sup>st</sup> Vice President for GFWC-WS.

Sincerely,  
Kimberly Skagen  
GFWC-WS Peninsula District President Elect



# Candidates for Office

---

## Kimberly Skagen candidate GFWC Washington State Treasurer

GFWC-WS Nominating Committee and GFWC-WS President, Tina Bair

Ladies, GFWC-WS Peninsula District is pleased to endorse Kimberly Skagen for the office of GFWC-WS Treasurer for the 2018-2020 administration.

Kim has proven herself a strong and dependable leader for GFWC since joining in October of 2010. She first joined GFWC Computer Link (2010 to 2015), then GFWC Valley Volunteers (2012 to present), and was a member of GFWC Kitsap Peninsula (2015 thru 2017). She has served as Secretary for both GFWC Computer Link and GFWC Valley Volunteers, and is the current president for Valley Volunteers. She is currently serving as the GFWC-WS Peninsula District President Elect.

On the state level she has served as Advocates for Children chairman, was the LEADS candidate for 2013, is the current GFWC-WS Clubwoman editor, and the current GFWC-WS Secretary.

A Boeing employee for the last twenty five years, Kim is a technical drafter who has been steadily given an increase in responsibility. She now serves as an ACE focal for Interiors and works with engineers, the factory and Cert engineers to ensure the plane is built, and ready for certification and completion. In the past, she has been the Lead of Airframe Drafting for a work cell over seeing ten people in Renton and thirty people in Moscow, Russia. She was responsible for managing schedules to ensure quality, productivity, input and output of the group.

In addition to her work experience, Kim has volunteered for other organizations besides GFWC, and held various positions including secretary, treasurer, scheduler, and registrar. She has managed three different "Coffee stations" at work which included coffee, snacks, etc. (This included purchasing supplies, collecting monies and maintaining financial accounting for the "Coffee Stations"); and has worked at tax preparation for twenty five plus years.

GFWC-WS Peninsula District is very proud to endorse Kimberly Skagen as Treasurer for GFWC-WS.

Sincerely,  
Dorothy Crowder,  
GFWC-WS Peninsula District President



# Candidates for Office

---

## **Tami Wright, candidate GFWC Washington State Secretary**

To Whom it May Concern:

The GFWC Springdale Club proudly endorses Tami Wright for the office of GFWC-WS Secretary.

Tami is currently serving as GFWC-Springdale Secretary. She has been an active member in GFWC since 2017 and has held local office as Secretary, has chaired events and fundraisers for the local club. Tami has served local clubs such as Springdale Boosters, Springdale Together Coalition, as treasurer, secretary and chair. Tami has also served local and state PTA positions from Historian, Secretary, Treasurer, Vice President and President.



We believe her to be well qualified to be the new GFWC-WS Secretary. Tami is knowledgeable on non-profit organizations and has not only held many leadership positions but was pivotal in the organization and formation of the Springdale Booster Organization. Tami owns her own private therapy practice and holds business contracts with 3 local school districts, bringing behavior and mental health services to students at school in our area, serves the children and families that are currently working with Children's Administration to improve family functioning by offering parent education, assessments, and counseling services. Tami has held many volunteer positions from Historian to President in the PTA when her daughters were young and the family lived in California. She has held committee chairs for the state of California PTA in the past. She spent two years as Chair for the Springdale Together on Prevention Coalition, having just given up that position this past November to take a more active role within the Booster Organization and GFWC.

Tami and her husband Dirk have 6 children and 3 grandchildren. They have lived in Valley, WA for the past 2.5 years having moved here from Michigan. Tami enjoys working outdoors on their property and being with her family. Tami and her husband are active with the local Booster Organization where Tami serves as club Treasurer and her husband is currently the board president. Tami has assisted in the soon to open Food Pantry, sponsored by the local Booster Organization and GFWC – Springdale.

With obvious pride, we urge the GFWC-WA to endorse Tami Wright for the office of GFWC-WS Secretary.

Sincerely,  
Cleo Miller  
Lela Taylor



## GENERAL FEDERATION of WOMEN'S CLUBS

### **The Washington Clubwoman**

is published quarterly by  
**Kimberly Skagen, Editor**

12100 SE Triviere TRL  
Port Orchard, WA 98367

Send submissions to:

WashingtonClubwoman@yahoo.com

Keep up with what is happening with GFWC locally, nationally and around the state.

<http://www.orgsites.com/wa/gfwcwashington/index.html>

*Find...  
Forms!*

*District events!*

*Club newsletters!*

*Fed Forest Save A Tree pins!*

*So many things to find!*

### **Your 2016-2018 GFWC-WS Executive Committee:**

#### **President:**

Tina Bair

#### **President-elect:**

Betty MacMaster

#### **First Vice-President:**

Lela Taylor

#### **Second Vice-President:**

Ginger Bowman-Rape

#### **Secretary:**

Kimberly Skagen

#### **Treasurer:**

Pinkie Eggleston

#### **Columbia District President:**

Pinkie Eggleston

#### **King County District President:**

Cindy Jorgensen

#### **Peninsula District President:**

Dorothy Crowder

#### **Northeastern District President:**

Bonnie Rail

#### **North Central District President:**

Margaret Schiffner

#### **Attending in advisory capacity:**

##### **Parliamentary Advisor:**

Bonnie Walden

##### **Financial Secretary:**

Laura Guerra

##### **Endowment Trustee:**

Jeanette Jester



## Events and Special Days

### **May 1st ClubWoman articles due**

March 1st CIC submissions due  
March 1st 8th Scholarship nominations  
March 1st 8th Clubwoman of the Year

March 1st Registration opens for  
GFWC Annual Conv

March-April Spring District Conferences  
March 20 First Day of Spring

March 19 Room Reservations due - Olympia  
April 11 Registrations due - WS Convention

April 19-22 Spring Convention & Installation  
Red Lion, Olympia WA

June 21 First Day of Summer  
June 22-26 GFWC Annual Convention  
St. Louis, MO





**OFFICIAL CALL TO  
GFWC WASHINGTON STATE  
122<sup>ND</sup> ANNUAL CONVENTION**  
“Walking The Bridge From The Past To The Future”

**APRIL 19 – 22, 2018  
RED LION HOTEL OLYMPIA  
OLYMPIA, WASHINGTON**



**ROOM RESERVATIONS**  
Red Lion Hotel Olympia  
2300 Evergreen Park Drive SW  
Olympia, WA 98502  
1-800-733-5466  
or [www.RedLion.com](http://www.RedLion.com)

Room Rate - \$119 plus tax *Use Code GFWC0419*

**ROOM RESERVATION DEADLINE IS MARCH 20, 2018**

## **PRE-CONVENTION EVENTS**

### **Thursday – April 19**

- 1:00 p.m. Past State President's Luncheon – Carlene Garner's home
- 3:00 to 5:30 p.m. Registration
- 6:00 p.m. Dinner – By Invitation Only
- 8:00 p.m. Executive Meeting – (following dinner)
- 8:45 p.m. Finance Meeting – President's Room

## **CONVENTION EVENTS**

### **Friday – April 20**

- Breakfast on your own
- 8 to 9:00 a.m. Registration
- 9 to 10:00 a.m. Art Room Open – In Meeting Room
- 9:15 a.m. Chairman Meeting – Lela Taylor – GFWC-WS 1<sup>st</sup> Vice President
- 9:30 a.m. Pre-Convention Board Meeting (Board of Director's) – Pine Room
- 10:15 a.m. **Convention Opening**
- 12:30 p.m. Lunch – Jim Perkins – AARP of Washington – “Fraud and Scams”
- 2:30 p.m. Business Session Reconvenes
- 4:00 p.m. Recess
- 4:15 p.m. ESO Meeting
- 5:15 p.m. No Host Bar
- 6:00 p.m. Dinner Guest Speaker, Deb Strahanoski, GFWC 2<sup>nd</sup> Vice President
- 9:00 p.m. Reception honoring Deb Strahanoski

### **Saturday – April 21**

- 8 to 8:45 a.m. Computer Link Meeting
- 9:00 a.m. President's Emeritus Breakfast – Emeritus Members Only  
(All past and current District Presidents and Past District Directors of Junior Clubs)
- 10:00 a.m. Business Session Reconvenes
- 12:30 p.m. Lunch – Federation Forest 90<sup>th</sup> Celebration
- 3:15 p.m. Recess
- 3:30 p.m. 2018-2020 – Executive Board Meeting
- 4:00 p.m. Installation Rehearsal for 2016-2018 and 2018-2020 Elected Officers
- 5:15 p.m. No Host Bar
- 6:00 p.m. Installation Banquet
- 9:00 p.m. Reception honoring Betty MacMaster –GFWC-WS President

### **Sunday, April 22**

- 9:15 a.m. Post Convention Board Meeting  
Presiding – GFWC-WS President Betty MacMaster
- 11:00 a.m. Adjournment

## MEAL INFORMATION

### **Friday – Luncheon – 12:30 p.m.**

#### **Brown Derby Tribute Chop Salad**

Chopped iceberg, arugula romaine lettuce, diced chicken, avocado, hardboiled egg, tomatoes, scallions, crispy applewood bacon bits, blue cheese crumbles, served with aged balsamic dressings.

### **Friday – Dinner – 6 p.m.**

**Mediterranean Chicken**, Caesar Salad, fresh rolls, seasonal vegetables, chef's selection of rice or potato and dessert, coffee, tea and ice tea.  
(Mediterranean breast of chicken topped with kalamata olives, sun-dried tomatoes, and caper relish topped with a pesto cream sauce.)

### **Saturday – Breakfast – 9 a.m.**

#### **Stuffed Croissant**

Large flaky croissant filled with scrambled eggs, shaved ham, chives and jack cheese, served with roasted breakfast potatoes assorted muffins, individual yogurt parfaits, juice, coffee and tea

### **Saturday – Lunch – 12:30 p.m.**

**Olympia Sandwich Bar** includes homemade potato chips and sliced melon and three sandwich choices: California Turkey Club on Ciabatta – Sliced turkey, lettuce, tomato, crisp applewood bacon, swiss cheese, avocado with mayonnaise on Ciabatta roll.  
Black Forest Ham on Rye Bread – Black Forest Ham, swiss cheese, crisp lettuce, tomato, red onion and honey mustard on rye.  
Vegetarian Focaccia – Sliced cucumbers, sweet bell peppers, olives, field greens, tomatoes, avocado, onion, sprouts with pesto cream cheese on focaccia bread.

### **Saturday – Dinner – 6 p.m.**

Maple Glazed Pork Loin, House Green Salad, fresh rolls, seasonal vegetables, chef's selection of rice or potato and dessert, coffee, tea and ice tea.  
Maple glazed pork loin – bone-in pork chop seared and glazed with espagnole sauce.)

### **Sunday Morning – Breakfast – 9:15 a.m.**

Scrambled eggs, bacon, roasted breakfast potatoes, assorted muffins, individual yogurt parfaits, juice, coffee and tea.



# GFWC WASHINGTON STATE 2018 STATE CONVENTION

**“Walking the Bridge From The Past To The Future”**

## REGISTRATION FORM

All Clubwoman Welcome

**Registration Deadline – April 11, 2018**

Name \_\_\_\_\_  
Address \_\_\_\_\_  
City \_\_\_\_\_ Zip \_\_\_\_\_  
Telephone \_\_\_\_\_ Cell \_\_\_\_\_  
E-mail address \_\_\_\_\_  
Federation Title \_\_\_\_\_  
Club \_\_\_\_\_ District \_\_\_\_\_

Yes, I have a GFWC-WS green name badge and will bring and wear it \_\_\_\_\_  
No, I don't have a green name badge; please make me name tag \_\_\_\_\_

You may order a green name badge at State Convention for \$12.00.

Registration Fee \$35.00 \_\_\_\_\_  
Additional Registration (if postmarked after April 11, 2018) \$ 5.00 \_\_\_\_\_

<b>Friday – April 20</b>	Lunch	\$24.00	_____
	Dinner	\$32.00	_____
<b>Saturday – April 21</b>	Breakfast	\$19.00	_____
President's Emeritus Breakfast - (All past and current District Presidents and Past District Directors of Junior Clubs)			
	Lunch	\$24.00	_____
	Dinner	\$32.00	_____
<b>Sunday – April 22</b>	Breakfast	\$19.00	_____

I have special dietary need (explain) \_\_\_\_\_

Total Enclosed \_\_\_\_\_

**Make checks payable to GFWC-WS State Convention.** Mail checks and completed form to:

Virginia (Pinkie) Eggleston  
27812 M Place  
Ocean Park, WA 98640  
360-665-5656

**Deadline for registration is April 11, 2018.** No meal refunds will be made after April 11, 2018.  
Registration fee is non-refundable.

One form per person, please

The following Bylaw amendments are submitted by the Bylaws Committee at the recommendation of the Ad Hoc Committee.

## **Article – Membership**

### **Section 1.1 Membership**

#### **A. Application for Membership.**

1. Application shall be made directly to the GFWC-WS Second Vice President, and shall include an entrance fee of ten dollars (\$10.00), a copy of bylaws, list of members, and per capita dues payable to GFWC-WS.

Amend by striking after the initials “GFWC-WS”, the words “Second Vice President” and inserting the words “Membership Chairman.”

If adopted will read:

#### **A. Application for Membership.**

1. Application shall be made directly to the GFWC-WS Membership Chairman, and shall include an entrance fee of ten dollars (\$10.00), a copy of bylaws, list of members, and per capita dues payable to GFWC-WS.

### **Section 1.3. Districts.**

- #### **A. Minimum Requirement.**
- There shall be a minimum of three per capita dues-paying clubs in each district. A district that does not meet the minimum requirement of three clubs shall be officially notified no later than February 1, by the GFWC-WS Treasurer with a copy sent to the GFWC President and Second Vice President.

Amend by striking after the word “and”, the words “Second Vice President” and inserting the words “Membership Chairman.”

If adopted will read:

- #### **A. Minimum Requirement.**
- There shall be a minimum of three per capita dues-paying clubs in each district. A district that does not meet the minimum requirement of three clubs shall be officially notified no later than February 1, by the GFWC-WS Treasurer with a copy sent to the GFWC President and Membership Chairman.

Section 1.3 Districts.

- A. 1. Following notification to such districts, the President and Second Vice President shall offer assistance to help the District President start a new club and/or recruit non-federated clubs.

Amend by striking after the word “and” the words “Second Vice President” and inserting the words “Membership Chairman.

If adopted will read:

- A. 1. Following notification to such districts, the President and Membership Chairman shall offer assistance to help the District President start a new club and/or recruit non-federated clubs.

**Article XI – Annual Convention & Special Meeting.**

Section 11.2 Representation. The Convention voting body shall be comprised of member of the Board of Directions, and accredited delegates or alternates from clubs and districts in active membership as provided in Article I, as follows:

- A. One delegate or alternate from each club of 12 members or less.
- B. Two delegates or alternates from each club of 12 to 24 members.
- C. One additional delegate or alternate from each additional 12 members.
- D. Two accredited delegates or alternates from each District Federation.
- E. Though entitled to vote in more than one capacity, a member shall have but one vote.
- F. GFWC-WS members who do not have voting credentials may take part in discussions but cannot make motions or vote.

Amend by striking the entire section and inserting a new section to read:

Section 11.2 Representation. Voting delegates to the Annual Convention shall be dues paying members of a GFWC-WS club that is in good standing. All voting delegates are required to pay the current meeting registration fee.



*The following proposed amendment will only be considered if the amendment to Article XI – Annual Convention & Special Meeting is adopted.*

**Article XIV – Parliamentary Advisor**

The Parliamentary Advisor shall be appointed by the President and attend meetings of the GFWC-WS Executive Committee, Board of Directors, Annual Convention and any special meetings called by the President, in an advisory capacity. She shall serve in an advisory capacity to the President and the GFWC-WS membership. She shall, by virtue of her position, be entitled to a voting credential.

Amend by striking the last sentence: “She shall, by virtue of her position, be entitled to a voting credential, and inserting a new sentence to read: As a dues paid member of GFWC-WS she shall be entitled to vote during the annual convention.

If adopted will read: The Parliamentary Advisor shall be appointed by the President and attend meetings of the GFWC-WS Executive Committee, Board of Directors, Annual Convention and any special meetings called by the President, in an advisory capacity. She shall serve in an advisory capacity to the President and the GFWC-WS membership. As a dues paid member of GFWC-WS she shall be entitled to vote during the annual convention.

**Housekeeping:** As a result of adopting the 2017 amendment to change the title of the First Vice-President to Vice-President, all reference to the office of First Vice-President shall be changed to read, Vice-President, including:

Article IV – Officers and Duties. Section 4.1 officer. A. Elected Officers.

Article IV – Officers and Duties. Section 4.2 Eligibility. B. Candidates the offices of President, President-elect, First Vice-President

Article IV – Officers and Duties, Section 4.4 Vacancy. C. In case of a vacancy in the office of First Vice-President

Article XII – Nominations and Elections. Section 12.1. Nominations

**Housekeeping:** As a result of adopting the 2017 amendment to eliminate the office of Second Vice-President, all references to that office are to be removed from the bylaws, including:

Article IV – Officers and Duties. Section 4. Offices, A. Elected Officers

Article IV – Officers and Duties, Section 4.2.Eligibility. B. Candidates the offices of President, President-elect, First Vice President, and Second Vice-President.

Article IV – Officers and Duties, Section 4.4 Vacancy. C. In case of a vacancy in the office of First Vice-President, the Second Vice-President may accede to the office.

**DELETED C.**

Article XII – Nominations and Elections. Section 12.1. Nominations.

# 2018 Proposed Resolutions

## Submitted by the GFWC-WS Resolutions Committee

### **HOME LIFE #408**

#### **SKIN CANCER AWARENESS AND PREVENTION**

WHEREAS, more than 2 million Americans are diagnosed with skin cancer each year; and

WHEREAS, Washington and Idaho are among the leading states with incidents of skin cancer; and

WHEREAS, the sun's rays contain 2 different kinds of Ultraviolet rays --- UVA is primarily responsible for aging, wrinkles and tanning, while UVB causes sunburn --- both of which damage the skin and can cause skin cancer; and

WHEREAS, sun exposure is the most preventable risk factor for all skin cancers; and

WHEREAS, with early detection and treatment skin cancer is highly curable even Melanoma, which can be fatal if not detected early enough, therefore

RESOLVED, that GFWC - Washington State members protect their families by:

1. Applying water - resistant sunscreen
2. Wearing appropriate protective clothing
3. Seeking shade when appropriate
4. Using extra caution near water, snow and sand
5. Avoiding tanning beds and sunburn

RESOLVED, they check themselves and family members for signs of moles or spots that become different from others, or that change, enlarged, itch or bleed, and further Resolved they see a Dermatologist when they find suspicious spots.



## **NEW HOME LIFE 409 BICYCLE HELMETS**

WHEREAS, many Americans ride bicycles to work or for enjoyment; and

WHEREAS, an alarming number of riders suffer serious head injuries each year; and

WHEREAS, many fatalities and life threatening injuries could be lessened or even preventive by wearing appropriate bicycle helmets; and

WHEREAS some counties and cities have already have helmet ordinances, there is no state law; therefore

RESOLVED, that GFWC--Washington State members contact their State Representatives urging the passage of a state law requiring the wearing of helmets approved by the Consumer Products Safety Commission when bicycling on public streets and roads.