



The Washington

# Club Woman

GFWC-Washington State is a member of General Federation of Women's Clubs  
([www.gfwc.org](http://www.gfwc.org)), 1734 N Street, NW, Washington, DC 20036-2990

Fall 2022  
Vol. 106 No. 2

## Washington State's Delegation GFWC International Convention 2022—New Orleans, LA



**Back Row:** Nancy Jones, Nancy Burdick, Cindy Bassage, Martha Curwen, Betty McMaster, Kathie Jorgensen. **Front Row:** Kim Skagen, Lela Taylor, GFWC International President 2020-22 Marian St Clair Jr. Director 2020-22 Kristina Higbee, Susan Tyler, Carlene Garner. Not pictured: LEADS participant Anna McKinney.

### Special Memories

I have a bit of a goosebump story to share... first formal sit down dinner of convention this lovely lady - Mar Jean, the outgoing President of GFWC Ohio, sits down next to me and I had to do a double-take. She could have been a sibling of Dorothy's! They resembled each other so much! We ended up eating together at several meals over the week and became fast friends. I told her she was my Dorothy doppelgänger and that Dorothy sent her to me so I wouldn't miss her so much. She told me she was honored. —*Kim Skagen*

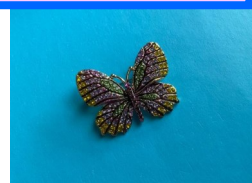
My favorite speaker was: "Carol Reese, a columnist for several gardening nature newspapers. Carol is a recently retired Extension Horticulture Specialist with the University of Tennessee's West Tennessee Research and Education Center in Jackson. Her highly entertaining talk, "Sex in the Garden," was a humorous but informative presentation focusing on the life that abounds in our gardens and in nature, and the integral relationships between birds, bugs, and plants. In fact, she gave us a whole new perspective on the birds and the bees, and garden statutes! And with a wink and a nod to our nev-

to "go forth and multiply!"

What I enjoy most is meeting with the many friends I have made across the states. I was busy with the "Big Easy Raffle" which was the big fundraiser for GFWC at convention. I sold tickets and helped supervise the room with the raffle items. I also had a blast dancing after the installation of the GFWC officers. —*Nancy*

### TRIBUTE TO DOROTHY

The picture below was from Tuesday morning, last day of the General session. It was also Dorothy's birthday and to honor her memory we all wore black and white and Cindy got us all rhinestone butterflies to wear. It was just our way to say Happy Birthday to our sweet friend who didn't get to attend convention with us.



**Back Row:** Martha Curwen, Kim Skagen, Kathie Jorgensen, Cindy Bassage, Betty McMaster, Nancy Burdick, Carlene Garner, Nancy Jones. **Seated:** Susan Tyler, Lela Taylor. **Not pictured:** Our LEADS participant Anna McKinney

"Living the Volunteer Spirit"

## GFWC International Convention 2022—New Orleans, LA

### Legislation and Public Policy Workshop at GFWC Convention

Washington state attendees each chose a different workshop so that we could learn as much as possible about the Advancement programs. I attended Legislation and Public Policy where I had the opportunity to go on a “hunt for a wily Wabbit” led by none other than Elmer Fudd. The Club Connection Initiative for Legislation and Public Policy is a scavenger hunt, which is intended to encourage legislative advocacy on the state, local and national level. I fulfilled #6 on the scavenger hunt (Member, club, or state photo with member of the Legislation/Public Policy Committee (1 point) and earned an extra point by promptly posting the photo to Twitter with the #GFWCAdvocacy. Beth Juvik will be collecting your reports and may organize some statewide projects over the next two years. I know you’ll hear more from her over the next two years! —*Susan Tyler*



### Exploring the Area

Record breaking heat and humidity did not deter us from exploring the food and culture of New Orleans (NOLA). We began the trip with a visit to Oak Alley plantation, located about an hour away from New Orleans. It wasn’t a wasted hour. Our tour guide explained why the cemeteries are raised (and it wasn’t what any of us thought!), the 300+ year history of NOLA, and the origins of the food staples that characterize the area such as beignets, gumbo, etouffee and pralines, which we were told are not PRAY-lines because there is no “Y” just as pecans are not PEE-CANS because that is an entirely different thing which can usually be found under the bed in very old houses.

Oak Alley was built by the Roman family, beginning in 1836 and finished in 1839. The fortunes and legacy of Oak Alley were based on pecans and cane sugar but after a series of mismanagement by the original owners, the home was sold in 1866. The last owner was childless and left the plantation to the Oak Alley Foundation on her death in 1972.



## GFWC International Convention 2022—New Orleans, LA

### Exploring the Area

**For me, the most interesting aspect of life at the plantation was the dichotomy between the lives of the owners/ masters and those of the enslaved people. Every exhibit at the plantation was balanced; one in particular caught my attention—it was a display of artifacts, including the bronze plate used to engrave wedding invitations for the Roman’s daughter juxtaposed by a anklet made up of a crab shell with small stones inside. The anklet was worn by an enslaved person so that it would be obvious when they entered a room, or if they attempted to leave the area.**



The following day Kathie Jorgensen, Betty MacMaster and I did our own mini-field trip to the world famous Café du Monde for hot beignets and Café au Lait. The beignets were divine! I mean really, how could deep fried sweet batter coated in clouds of powdered sugar be anything other than divine? I’m told the Café au Lait was equally great but not being a fan of coffee, it just tasted like coffee to me. The day was rounded out with a cooking class



at the New Orleans School of Cooking. I cannot fathom how it is that a simple roux with ingredients I use on a regular basis are so much better in NOLA than what I make at home but I came home with a cookbook and spices to see if I can replicate the wondrous flavors of file gumbo and fresh pecan pralines. —*Susan Tyler*



## WINGs to Adventure!

It's been a busy summer learning about the GFWC mission to make our communities "sparkle and shine". In addition to the great New Orleans food and architecture, meeting the other state Presidents and GFWC officers who I will share this adventure with over the next two years was a highlight of the convention. We listened to riveting and often funny speakers, and had the opportunity to visit a plantation and

take a cooking class. It was great fun all around even with record breaking heat.

Washington state received several awards – the state was awarded a \$50 check in recognition for the formation of GFWC Avalon, President Lela Taylor received the Charlotte Brown Emerson for outstanding state leadership, and GFWC-Kitsap Peninsula was awarded \$50 as the 1<sup>st</sup> place CIP winner for Washington state, with another \$35 going to GFWC Chambers Bay as the 2<sup>nd</sup> place CIP winner.

We kicked off the WINGs administration at the Summer Planning meeting in Auburn. Food, fun and information were enjoyed by all, and we learned about the complex (and sometimes messy) relationships between native plants and their pollinators. Cindy Basage's communication BINGO had an unexpected instruction which demonstrated the importance of listening to ALL the instructions before starting an exercise, and Kim Skagen did her best to overcome technical difficulties with the projector to show everyone how to access and navigate the GFWC Portal.

I'm looking forward to my first Board of Directors meeting in Washington DC in a few weeks followed a few days later by Western States Region in Anchorage. I'm sure I'll return home with great ideas on how to spread the word about GFWC and how to make our communities sparkle and shine.

I hope to see everyone at the GFWC-WS Fall Board "Passport to Adventure" in Yakima Sept. 23 through the 25<sup>th</sup>. We have plans for several fun activities, interesting presentations and of course, time to talk and laugh and compare our summer adventures wherever they took us.

**Until then, keep inspiring others!**

Susan Tyler

WINGs (Women Inspiring New Generations)





# Summer Planning Meeting



**Top:** President Susan leads the session. **Right:** Dean of Chairmen Betty MacMaster shares her expectations. **Middle:** Nancy Burdick, Susan Tyler and Suzanne Bagdon - two of three intrepid convention committee members (Char Lysne was busy setting up food and coffee and didn't make it into the picture). **Lower right:** Our lunch time speaker, Mary Nakasone, sharing her passion for preservation of native plants.



"Living the Volunteer Spirit"



# Leadership

Welcome to all of you newly elected Club Presidents and other Executive Board members! What a great step you have taken on what could be a very interesting and educational journey!

Leadership really begins with membership, your club membership! As a newly installed President, one of your first actions should include making sure you have contact info for all your members, including accurate email addresses. Make a DL in your personal email set-up so it's easy, one stop shopping when you need to communicate with your club! Next, set up a meeting with your executive board, or your whole club membership, and explain your vision for the next two years. It's important to establish a direction while also engaging everyone to ensure success. What projects are working? What projects were stinkers and should be retired? Do you have someone assigned to focal new interests and encourage growth in that venture?

The Call to Fall Board is also in this newsletter along with a preliminary agenda. We are planning for a Leadership Workshop, something fun from the Leadership Toolkit! Please encourage your clubs to attend. Yakima is always fun, more laid back than a Spring Convention, a great way for new members to come and see what we do! See the announcement regarding LEADS, it's not too early to be looking at members who show an interest, encourage them to grow by considering the opportunity. Have YOU considered it? Only state board elected officers are ineligible, maybe now as a Club President its time for you to take the next step! Reach out to myself or your District Presidents for help. We are all here to assist!

*A good leader inspires people to have confidence in the leader, a great leader inspires people to have confidence in themselves."* - Eleanor Roosevelt, author, politician, and diplomat

Looking forward to working with all of you and growing our next leaders!

Kim Skagen

GFWC-WS President Elect

GFWC-WS Leadership Chair

# Leadership Education & Development Seminar (LEADS)

It's not too early to start thinking about members in your club, or even yourself, who would benefit from the opportunity to attend the LEADS Program representing Washington State! Applications are due December 15, 2022!!!

The GFWC Leadership Education and Development Seminar (LEADS) program is intended to identify GFWC members at the grassroots level who have the potential and the desire to assume leadership positions in their own state federations or beyond. Participation in LEADS can help these upcoming leaders gain the capabilities, confidence, and commitment necessary to pursue and achieve higher office and serve with distinction.

For 2023, the LEADS program will be held June 9<sup>th</sup>, the day before the official opening of the GFWC Annual Convention, in the amazing city of Louisville, KY! It promises to be a full day of activities and includes lunch. Both GFWC and GFWC-WS contribute toward the costs of attending but some cost will be the responsibility of the attendee.

Application forms and all the details will be in the WS Club Manual which will be available in the next few weeks, as well as on our website.

If you have any questions, please reach out...

Kim Skagen

GFWC-WS President Elect

GFWC-WS Leadership Chair

## 2022 GFWC-WS LEADS Graduate, Anna McKinney shares:

*My experience with LEADS at National Convention in New Orleans. I want to say "Thank you for choosing me to be in the LEADS Program". It was an awesome experience to meet fellow GFWC members from across the country and to see how the organization runs at a national level. I loved the fact that all of us in LEADS were learning at the same time. Some of us had years with the GFWC and some were fairly new to GFWC. On the day of LEADS, members interchanged the table seating each time with a new presentation, thus giving us a chance to learn more about each other and their respective clubs. We worked with those at our tables for solutions to some of the topics, sometimes we gave insight to what our own Clubs did and then presented at the end of the topic the top picks. Those who were speakers for LEADS were very knowledgeable and presented on the topics well and clear. The interaction after each presentation from LEADS candidates on the floor were very informative. I encourage others to become a LEADS candidate.*



# Federation Forest

## Interpretative Center Hours Summer 2022

**OPEN:**

**11am–1pm Monday, Tuesday, & Friday**

**11am – 4pm on Saturday and Sunday**

**CLOSED: Wednesday and Thursday**



The Catherine Montgomery Interpretive Center (CMIC) is currently being run by camp hosts, Mick and Jeanne, who arrived there in June and plan to stay until the day after Labor Day (9/6).

### **Bulletin boards get new metal roofs**

During the month of May, Federation Forest was blessed with an exceptionally talented park host who replaced the roof of each of the bulletin boards. The brown metal roofing material used matches that used on CMIC.

### **Women's hiking group visits park**

A group of fifteen women hikers made arrangements for a ranger-lead nature walk June 4. Here is an excerpt from their thank-you note:

*"Thank you for hosting our M&Ms (Mostly Monday Hikers) women's group at Federation Forest State Park this past Monday. I appreciated you replying to my calls and emails and assisting me in planning an interesting day for the group. Thank you for arriving early at the park to set up chairs, tables, and displays for us in the Catherine Montgomery Interpretative Center. We enjoyed your introduction and seeing pictures of the women who advocated to save the old growth forest one hundred years ago. Fortunately, Washington State Parks have managed to preserve their legacy."*

**more park news on next page**



## Federation Forest

**DONOR PLAQUES FROM ORIGINAL PARK FOUND**—An arbor crew working in the park found another donor tree marker from the original park as they were working on an old-growth tree recently. The donor's name is **HEB Jordan**. This plaque is what was at that time thought to be the second one recovered; the first being found around 2016 by Area Man-

ager, Jeff Vassallo. The donor named on that one is **GFWC Past Presidents Club**.

Interpretive Exhibits Coordinator, Sam Wotipka just learned that another of these plaques was found in recent years on a hazard tree that had to be cut down—and a pretty important one at that! The donor was **Esther Maltby**, GFWC-WS 16th president

whose project was to create a park of old trees. Over 100 plaques were sold for \$100 each as one of the fundraising efforts to purchase land for the park.





# Community Service Program Reports

## Environment

Sally Larson, Chairman



### Nature's Best Hope

This is the title of a book I read that changed my approach to the environment. The author, Douglas Tallamy proposes the best chance for both plants and animals to survive is to go native. If everyone had mostly native plants and trees in their yard, the nation would be one huge National Wildlife Refuge. Of course that is not going to happen, but I want to challenge each club to plant one native tree each year of Susan's presidency. This tree can be planted in a yard, neighborhood park, or in a forest, the tree just has to be native

Native trees are available through the states conservation districts, native plant sales, and sometimes local garden shops. Lowes and Home Depot are not as reliable for native trees, they often sell hybrids that are not friendly to the native animals, insects, and birds. Why are natives important? Birds who come from our area, evolutionarily, can only get maximum nutritional benefit from plants native to where they live. Baby chickadees need a specific type of spider who will live on natives. The willow, our number one tree for birds is host to 100s of bugs that birds need.

As the year goes on I will highlight a specific tree that grows and is available for sale in Washington. I won't highlight the willow because of the very specific planting requirements.

Let's start with my favorite tree, Pacific Nine Bark:

- Grows in sun or shade
- Up to 15 feet
- White showy ball shaped flower that attracts bees and butterflies in late spring
- Yellow fruits and small brown seeds in summer and fall that attract orioles, towhees, bluebirds and tanagers
- Distribution -- all of western Washington and parts of eastern Washington
- Unique quality-defoliating bark





## Special Projects, Legislation and Public Issues

Beth Juvik, Chairman



By the time you read this, the primaries will be history. Our roadways were heavily decorated with campaign signs and we were sent emails, phone messages, texts, mailings, radio, TV and internet ads and the voters' pamphlet. The State Senate race had eighteen candidates running! I know you all did your civic duty and voted.

### **Remember to VOTE on or before November 8 !!**

The new GFWC Administrative Handbook is out online. I have briefly looked over the pages and there are some great ideas. I will information at Fall Board in Yakima.

**My focus** is on local/state knowledge in your community and state. Know what your local elected officials, councils, etc. are doing and their voting record so you are not surprised down the line. Many public meetings are televised and you can always attend in person. Know and follow your State Representatives in Olympia. I will gather names, mailing and email addresses and phone numbers for local and state officials and am excited to have information for you in September.



"Living the Volunteer Spirit"

# **Special Projects, Community Impact Program**

**Lynn Cline, Chairman**

The GFWC Community Impact AWARD offers GFWC Clubs financial incentive to implement projects designed to impact a specific problem in the community.

This of course leads to the team work and brain storming of our club members to find the needs of the community and to give what we can give for the betterment. This CIP program offers the flexibility to our clubs to handle the implementation of three projects that have a meaningful impact on a particular problem. The club can work quarterly on one project from “beginning to fruition” Some efforts could require more rigorous planning and implementation. This is for the team work of the club to administer.

This is a two-year administration project. The goal of this award, however, remains the same—encourage and recognize the positive impact that a club can have on a specific need in the community.

Award period January 1, 2022 to December 31, 2024

GFWC State Award: \$100 First place

GFWC National Award: First Place winners are given \$2500 within the Six State Membership categories.

Contest descriptions: Each entry can feature one to three local projects undertaken by a club, all accomplished during award period Each entry should include one page of information on each project (maximum 500 words) to highlight.

## Project Goals

- Plan of action including timeline
- Engagement of members, including total hours
- Financial/Funding details, including total contributed
- Collaborating partners or individuals
- Media coverage
- Measurable impact(s)
- Any other key information

Each entry may contain one page of photographs for each project (max 4 per page)

Each entry can contain one page of publicity highlights for each project (max 4 per page).



**Continues on next page**

## **SPECIAL PROJECTS-COMMUNITY IMPACT PROGRAM**

Continued from previous page

Total entry cannot exceed 10 pages:

A Community Impact Program Award Cover Form plus three (3) additional pages for each project (info page, photo page, publicity page)

Clubs that have previously won this award must submit entirely new projects for consideration. Expanded projects will not be considered

Joint entries of clubs is not allowed.

All monetary awards must be used to further the community impact initiative.

Award entries of national winners will be kept in the GFWC Women's History & Resource Center

**Club entries are to be sent to Lynn Cline GFWC-WS Chairman by March 1, 2024.**

All Forms can be found in GFWC Manual or GFWC-WS Manual under "Community Impact Program" Forms.

Additionally, GFWC clubs are encouraged to consider the community connection:

- Raise Awareness to Hope and Help
- Arts and Culture Community Historical Gems
- Civic and Outreach: A Little Thanks goes a Long Way
- Education and Libraries: Bring the Sparkle to Public Libraries
- Environment: Sparkling Seeds, Brilliant Butterflies, Glamorous Garden Gloves
- Health and Wellness: Physical Fitness Opportunities for all ages



# Educational Scholarship Fund

Rena Johnston, Trustee

Wow, it's August already! Soon the new school year will be upon us. Ladies, **now** is the time to be planning to get scholarship applications into the schools for interested students. Applications have been sparse the last couple of years.



All the requirements for scholarships will be in the new Washington State Administrative Handbook. The deadline for students to turn in their applications is March 1st. Your club does not have to give a scholarship in order to submit a candidate for a state scholarship. However, only one scholarship entry per club can be considered for a state scholarship award. Start thinking of ways to provide funds to the State Scholarship Fund.



Add it as a line item to your budget, plan a fundraiser that will benefit the scholarship fund, or individuals can donate to the scholarship fund. Make it a priority this year, please.

Scholarships are important to these young women desiring to further their education. Let's help more students this year.

**WINGs (Women Inspiring New Generations)**

# **Clubs in our State**

## **GFWC Battle Ground**



Paulette Stinson, left, GFWC Columbia District President, performed an installation ceremony based on a garden of flowers.

Next to Paulette is Mary Lee (observer), Treasurer Ginger Crabtree, Secretary Darlene Angelatos, Vice-president Leese Pohl and President Johanna Hyatt. Mary Lee gave each outgoing officer a "ladybug-themed" token of appreciation.



Johanna Hyatt, incoming president, receives the club gavel and president's pin from Mary Lee Miller, outgoing president.



Mary Lee Miller, left, received a beautiful handmade quilt for her two years of service as club president. Quilt top was created by Johanna Hyatt, incoming president.

### **WELCOME New Member**

Marsha Gregor, left, was initiated into club membership by chairman Louise Tucker. Besides a club flower, Marsha received a club yearbook, GFWC pin and a goblet because it's a "happy hour" when volunteering.



"Living the Volunteer Spirit"



# **Clubs in our State**

## **GFWC Battle Ground**

GFWC Battle Ground signed up for booth space among 22 other organizations and agencies at the National Night Out August 2. Within the overall theme, “Together Prevent,” It was the perfect venue for club members to

hand out free pinwheels to tell families that “Every Child Deserves a Childhood Without Abuse” and instructions on the use of the universal domestic violence hand signal. The GFWC flag and membership materials



were also in place. In the photos are Wendy McDaniels and Paulette Stinson and several recipients of pinwheels.



“Living the Volunteer Spirit”



## Clubs in our State

### GFWC Camas Washougal

In the month of June, the City of Camas celebrates its community by hosting a 4-block party. The streets are closed off to all vehicles and is only open to foot traffic.

For the past 14 years GFWC C-W has been host our Camas Days Royalty with a Coronation, private viewing tent for the parade and luncheon after the parade. To be a member of the Royal Court, a person 55 years of age is nominated by their peers and selected by a nominating committee. The 2022 Queen is Molly Coston.

**Top Left:** Chris Kamps - President presenting Queen Molly with her trophy

**Lower Left:** Jeanette Jester - Secretary introducing Molly during her Coronation

**Right** - Queen Molly with her crown





# **Clubs in our State**

## **GFWC Camas Washougal**



Queen Molly rides in 1965 buttercup yellow Stingray behind the GFWC banner which was carried by Club member Angela Hancock's daughters, Iris and Violet.

## **Clubs in our State**

### **GFWC-WS Chambers Bay**

Chambers Bay has had a relaxing summer. We have driven across the USA and back, traveled to New Orleans for GFWC International Convention, traveled abroad and enjoyed the Pacific Northwest. Many enjoyed staying in the area with family and friends. We finally got summer, then hot and cooling down now. We continue to have our cutting parties to provide the starts for Days for Girls menstrual pads. Some have helped at My Sister's Pantry twice a month all summer. AMARA is continuing to get almost weekly support. Our habitat restoration work party meets the first Monday of each month to pull ivy and Himalayan blackberries, a never-ending job. We are gearing up with ideas for our September meeting.

We have just started to work on our new fundraiser, making crafts for a holiday bazaar in November. We also have a club member who has moved into a group home after a mild stroke. Members have been very supportive, making sure she has visitors, helped in gathering her personal items for the move, take her out for brief shopping, lunch or dinner and most importantly, providing great conversation and game playing.

In an email from "The Loft" (Serra House), a teen safe haven in downtown Tacoma, they asked for ideas to help keep the teens busy, fun outings. A club member has extra baseball tickets for Rainiers games which she has donated some 20 and the club donated \$150 to help with food. To date, we know of one outing. A member came upon a deal that she couldn't pass up but restrained herself. A retail store was clearing out nice shirts for \$1 and she purchased 20 for "The Loft", including some 2X.

Our executive board meeting will be held in mid August. We can't wait for non-Zoom meetings as well as all the exciting things we will plan to help our community—both people and the environment. It will be fun welcoming our "NEW" members, too.



## **Clubs in our State**

### **GFWC Apple Blossom Club**



**GFWC Apple Blossom Club** is going strong. We have our monthly “email meeting” and a monthly Zoom meeting mostly just to chat. Some members like to knit or crochet. 40 knitted knockers were made and given to a nurse who travels to Mexico for extended periods of time. The women who receive them in Mexico are so appreciative and some even cry with joy. Other club members make hats for babies and children. Members collect plastic bread tags which will be donated to Danielle Cares for Chairs an organization that gives wheelchairs to children. It takes 260,000 to 600,000 tags to purchase a wheelchair. The tags can be found on a lot of products, bread, rolls, carrots...

### **GFWC Kitsap Peninsula**

We recently held a work party to cut out Christmas stockings. The stockings will be sewn together and then at our November meeting we will fill them for the children at YWCA women’s shelter. Pictured on the right are Nancy Burdick and Julie Thompson at our rummage sale at a Community Festival.







## GFWC Spokane Community Outreach



### 4 Class Sessions SEW Successful

Earlier this year GFWC Spokane had a fundraiser to support a project for local refugees. Funds were used to purchase “sewing kits” and materials.

In July, club members Abil, Suzy, Ellen and Mary taught basic sewing skills using donated sewing machines. They provided instruction in our clubroom .

The club is providing space in our historical 1910/1928 clubhouse for the Congolese and 4 other tribes to gather for events up to 120 people. Suzy reminds us "When you rent event space at the Womans Club, you help us to fulfill our mission to do good things in our community".





## Clubs in our State

### GFWC Peninsula Keystone

We held an English Tea August 5 in Nancy Burdick's backyard. Members made tea sandwiches, scones and sweet treats which were served with a variety of teas.

**Left:** Nancy Burdick, Julie Thompson, Beth Juvik, Laura Guerra. **Right Top:** Martha Curwen, Carlene Garner, Cindy Bassage, Juanita Paulson, Lynn Cline. **Right Center:** Nancy Burdick, Juanita Paulson, Char Lysne, Laura Guerra, Julie Thompson, Lynn Cline, Cindy Bassage, Beth Juvik, Martha Curwen.



"Living the Volunteer Spirit"



# **Peninsula District**

## ***Up Coming Peninsula District Events***

### **Fall Board**

#### GFWC Peninsula District Fall Board

Wednesday, September 22,  
Burs Restaurant  
6151 Steilacoom Blvd  
Lakewood, Washington 98499

5:30 – 6:45 Dinner and Social

7:00 – 8:00 Board Meeting



All members are welcome to attend. Come help plan our Fall Conference.

### **Fall Conference**

#### GFWC Peninsula District Fall Conference

Saturday, October 22,  
9:30 – 10:00 Social Time and Light Breakfast  
10:00 – 2:00 Conference  
Hosted by GFWC Peninsula Keystone  
Theme: Harvest of Friends  
United Church, University Place, WA  
3912 Grandview Drive W  
University Place, Washington 98466



The day is promised to be filled with lots of fun and laughter. Hope you plan to attend.

Cindy Bassage, Peninsula District President

# **Clubs in our State**

## **North Central District**

### **102<sup>nd</sup> Anniversary Luncheon & Membership Recruitment - March 2022 Moses Lake**



**Left:** Lela Taylor  
2020-22 GFWS-  
WS President  
speaks to the  
group gathered for  
this special cele-  
bration. **Middle,  
top to bottom:**  
Susan Tyler, 2020  
-22 President-  
Elect **Center:**  
Barbara Murray,  
Membership  
Committee



**Above:** Lynn  
Cline, 2020-22  
Membership  
Committee Chair-  
man



"Living the Volunteer Spirit"



## Miscellaneous

Submitted by Lynn Cline

### **Beekeeping as told by Lorenzo Lorraine Langstroth, published in 1853 under the title “Langstroth on the Hive and the Honey-bee”**



As we all know, honey bees now live in all parts of the world except the extreme polar regions, but this was not always so. Until the 16<sup>th</sup> century they were confined to the Old World, where they had evolved and were widely distributed long before man appeared on earth. Primitive man learned to get honey by robbing the bees' nests in hollow trees or rock crevices; a painting made in a rock shelter in the mountains of eastern Spain in Mesolithic times probably about 7000 B.C., survives to show us how this was done. Bee hunting is still carried out in various parts of the world, and honey can still be a lifesaving food for primitive peoples in times of famine.

Beekeeping proper started when man learned to safeguard the future of the colonies of bees he found in hollow tree trunks or elsewhere, by a certain amount of care and supervision. Gradually separate hives came to be used as substitutes for the natural dwellings of bees; for convenience and safety they were collected together in an apiary. Hive construction depended on what local materials were at hand, and on the local skills of various communities. It is almost certain that the beehive had no single origin: it was an inevitable development in any region populated by honey bees, as soon as man advanced from hunting and collecting food to producing it, and thus started a settled existence.

In the great forests of Europe, the earliest hive probably was a log from a fallen tree in which wild honey bees had nested. The log would be separated by chipping away the rest of the tree by axe and aze, a technique used throughout the stone age. Cork and other types of bark were also made into hives, and later planks cut from tree trunks. Basketry and pottery were also used to house bees. The bone awl effectively the same as that Mesolithic basket maker was in fact used for making skeps for bees as late as the 1950's in Yorkshire dale in England. Woven baskets came later and were made of pliable hazel twigs. These examples made between 3000 and 2000 B.C. have been found in Egypt. Wicker-work hives still linger in parts of Europe.

Little was understood as to what went on inside the hive for events could not be seen. It was not realized that the large “KING” was in fact a female, mother of the other bees in the hive, nor were the sexes of the workers and drones understood, let alone the facts of mating between queen and drone. It was known that the bees themselves secreted the wax with which they built comb, nor that their visits to flowers had anything to do with the formation of seeds and fruits.

Continued on next page

## Miscellaneous

Continued from previous page

Three separate streams of events, each of great significance in the history of bees and beekeeping were set in motion in the 16<sup>th</sup> century and led on to Langstroth's advance in 1851. First, scientific and technical developments enabled beekeepers to understand the fundamental facts of the life cycle and biology of their bees; second, and coupled with the first, there developments in beekeeping methods which gave beekeepers slightly more control over them, as well as greater opportunities for observing the bees inside the hive; third, the honey bees themselves spread over two new continents, from one of which was to come the greatest single advance in science and craft of beekeeping.

The first description of the queen bee as a female which laid eggs, was published in Spain in 1586. Then in England in 1609 it was shown that the drones were male, then in 1637 "Discourse or History of Bees" that the worker bees were female, Richard Remnant, the author, observed that they possessed "a neat place for the receipt of generation." In 1625 in Italy, Prince Cesi published the first drawings of bees made under a microscope. In 1568 the fact that bees could raise a queen from eggs or very young larvae was published in Germany by Nickel Jacob, but was the primary facts about the mating of the queen with the drone was unavailable until 1771 when Anton Janscha in Slovenia published an account of the event. A correct description of the production of beeswax by bees was published by H.C. Hornbostel in 1744. The fact that the pollen which the bees collect is the "male seed" of the flower, which fertilizes the ovum, was discovered 1750 by Arthur Dobbs; he observed that bees gathered pollen from only one kind of flower on each flight and suggested that disastrous cross fertilization would result if this were not so.

We must now leave the story of beekeepers unsuccessful attempts to invent the hive they needed, to follow the adventures of the bees themselves during the same 2½ centuries. The honeybee belonged to the Old World--to Europe, Africa, and Asia. Prior to 1500 there were no honey bees in the New World--the America's Australia, and New Zealand. Like the dog, the honey bee had accompanied man on most of his migrations and the early settlers in each part of the New World took hives of bees with them. Records of the establishment of honey bees in North America do not start until 1638. The first honey bees were landed in Australia at Sydney in 1822 and W.C. Cotton took the first consignment to New Zealand {from England} in 1842. Honey bees were not introduced to the west coast of North America until 1850's when they landed in California; from there they were taken to Oregon, and thence to British Columbia. It is thus little more than a hundred years since honey bees—members of the genus *Apis*—have lived in all five continents.





## Events & Special Days

August 25-28	WSR Conference— Anchorage, AK
Sept 5	Labor Day
Sept 23-25	<b>GFWC-WS Fall Board, Yakima</b>  President Emeritus Club members— please bring your dues
<b>Nov 1</b>	<b>ClubWoman Articles Due</b>  <b>State dues are due</b>
Nov 6	Daylight Savings Ends
Nov 8	Election Day
Nov 11	Veterans Day

*From Your New Editor:*

*Thank you to Susan for having the confidence in me to allow me to create and publish our state newsletter and to Kim and our wonderful webmasters, Rita & Dale for their help and support. A great big shoutout to all of you who have submitted articles and pictures. It is because of your input that our newsletter can be created.*

*Char*

## GFWC Resources

The **GFWC Member Portal** at GFWC.org has a comprehensive digital library of members-only resources and documents to help clubs and individuals make a difference in their communities through volunteer service.

After logging in to the Portal, click on “My Digital Library” under the profile icon in the upper right corner and select the GFWC Resources folder. The top folder contains an Index listing where all of the documents are filed in the A–Z Resources folders. Among the many resources exclusively available in the Portal, the members-only “My Digital Library” includes:

- The [2022–2024 Club Manual](#)
- GFWC emblem and logo [files](#)
- Icons for the [Special Programs and Community Service Programs](#)
- Resolutions
- Resources for recruiting and building your club membership
- And many more resources and documents!

—If you have forgotten your password, see YouTube video, “Forgot Your Password” on **GFWCHQ** channel.—



## GENERAL FEDERATION of WOMEN'S CLUBS

### The Washington Clubwoman

Is published by

**Charlene Lysne, Editor**

5426 Windemere Dr. SE

Olympia, WA 98501-5044

Send submissions to:

WashingtonClubwoman@yahoo.com



### 2022-2024 GFWC-WS Executive Committee:

#### **President:**

Susan Tyler

#### **President Elect:**

Kimberly Skagen

#### **Vice President:**

Cindy Bassage

#### **Secretary:**

Nancy Jones

#### **Treasurer:**

Virginia "Pinkie" Eggleston

#### **Columbia District:**

Paulette Stinson

#### **King County District:**

Nancy Larsen

#### **Peninsula District:**

Cindy Bassage

#### **Northeast District:**

Bonnie Rail

#### **North Central District:**

Margaret Schiffner

#### **Advisories:**

#### **Parliamentary Advisor:**

Kathie Jorgenson

#### **Financial Secretary:**

Nancy Larsen

#### **Endowment Trustee:**

Cheryl Holman

#### **Administrative Secretary:**

Martha Curwen

GFWC-Washington State is a member of General Federation of Women's Clubs, 1734 N Street, NW Washington, DC 20036-2990 Phone 202-347-3168. Website [gfwc.org](http://gfwc.org)

### **RESOURCES:**

Keep up to date with GFWC happenings ... locally, nationally and around the state.

#### **Our GFWC-WS website:**

<https://www.gfwcws.org>

#### **Our email for website submissions:**

[webmasters@gfwcws.org](mailto:webmasters@gfwcws.org)

Find...

**Forms!**

**Manuals!**

**District events!**

**Pictures!**

**Club & State newsletters!**







**GFWC-WS**  
**PASSPORT TO ADVENTURE**  
**FALL BOARD**



**September 23-25, 2022**  
**Red Lion, 607 E. Yakima Avenue**  
**Yakima, WA**

**Fundraising Fall 2022**  
**INTERNATIONAL MARKET**

Time to take WINGS and fly away to places all over the world! At Fall Board we will have 4 tables in the Meeting Room for our Market Place. You can have half a table for \$15.00 and greater exposure. Since before and after meetings, our voyagers will be able to see what is available so when we “open” for business, they will have already window shopped and ready to buy. This will bring some funds into the individual clubs. To make it more fun, you can decorate your table to go along with the country you sign up for. Please contact me if you have questions.

For our meeting Fundraising we will have the 50/50 Raffle but will have separate raffles for each day so that is two chances to win the pot! We also need cards (\$5 to \$25) instead of baskets, mugs or jewelry for our Gem Bag Fundraiser at \$5 per bag. The more gift cards, the more prizes.

Hope to see everyone at Fall Board in September!

Sally Gill, Fundraising Committee

***“Women Inspiring New Generations”***

# 2022 GFWC Fall Board

## W.I.N.G.s – Passport to Adventure!

**Location:** Red Lion Yakima Hotel and Conference Center  
607 E. Yakima Ave, Yakima, WA 98901  
509-248-5900 (Reservations)

**Dates:** September 23 – 25, 2022

### Welcome to Passport to Adventure!



Get your WINGS in order and prepare to set off on a whirlwind tour of the world of GFWC at our Passport Fair

Forced to Flee – the Refugee Experience

What's your style? – Leadership, that is!

And most importantly, get ready for a weekend of fun, friends and learning at the annual GFWC-WS Fall Board

### Friday, September 23

3:00 – 6:00	Registration table open
3:30 - 4:00	Committee meetings (Federation Forest, Leadership, Membership, Nominating, Resolutions, Scholarship)
4:00 – 4:30	Club Presidents CSP & Special Projects Chairmen
4:30 – 4:45	Elected Officers
4:45 – 5:15	Finance Committee
5:15 – 6:00	Executive Board
6:00 – 8:30	Past State Presidents Dinner
8:30 – 9:30	Immigrant stories from our past

### Saturday, September 24

7:00 – 8:45	Complimentary breakfast
7:30 – 8:45	Registration table open
8:00 – 8:30	Bylaws committee District Presidents
9:00 - Noon	Business session
Noon – 1:15	Lunch; the Refugee Experience
1:15 – 4:30	Business session resumes
5:30 – 8:30	No host bar / dinner Travel panel – tips to get the most from your trips

### Sunday, September 25

7:00 – 8:45	Complimentary breakfast
8:00 – 8:45	President Emeritus meeting
9:00	Business session
Noon	Meeting adjourns, safe travels home!



### ***Red Lion Hotel Yakima***

- Rooms \$115 per night plus taxes with complimentary breakfast
- King and Double Queen rooms available
- Room block listed under 'General Federation of Woman's Club – Washington State
- Room rate expires September 9, 2022

### ***Menu Choices:***

#### **Saturday lunch:**

**Deluxe salad & baked potato bar** -Chef's choice soup; baked potatoes with toppings; fresh garden greens with assorted dressing, Caesar salad, rolls with butter, assorted dessert bars

#### **Saturday dinner:**

**Vegetarian** - Medley of roasted vegetables in pastry with charred tomato and pepper sauce, topped with feta cheese

**Grilled chicken breast and artichoke penne pasta** in lemon butter sauce with capers, roasted tomato, mushrooms, spinach and parmesan

**Char-Grilled King Salmon Filet** basted with basil-garlic butter

*All dinner choices served with served with salad, starch and seasonal vegetable, artisan bread and butter and dessert*

### ***Dress:***

Friday evening:	Casual (jeans acceptable)
Saturday day:	Business casual (khakis, etc.)
Saturday evening:	Dressy; after 5 clothing
Sunday:	Casual, GFWC branded clothing encouraged

### ***Please bring:***

- Diapers to be donated to Domestic Violence shelters.
  - (Larger sizes and Pull Ups encouraged)
- Photograph and history showcasing your family's immigrant past for Friday evening activity
- Fundraising:
  - ✓ Double the opportunity to win a 50/50 split (Saturday and Sunday)
  - ✓ In lieu of mugs or baskets, Clubs and members are asked to provide gift cards from \$5 to \$25 in value). These will be added to Gem Bags which can be purchased for \$5
  - ✓ Table space available for club sales (\$15, 4 ft. width, eight table spaces available)
- Washington State green nametag. If you don't have a nametag, you may order one on the registration form below for \$15.00.

# 2022 GFWC Fall Board

## W.I.N.G.s - Passport to Adventure!

Name: \_\_\_\_\_

Address: \_\_\_\_\_

City \_\_\_\_\_ Zip: \_\_\_\_\_

Phone: \_\_\_\_\_ email: \_\_\_\_\_

Federation Title: \_\_\_\_\_

Club: \_\_\_\_\_ District \_\_\_\_\_

<b>Saturday &amp; Sunday breakfast</b>	Complimentary with room	N/A	
<b>Saturday lunch</b>	Deluxe salad & baked potato bar	\$30.00	
<b>Saturday dinner</b>	Medley of roasted vegetables in pastry	\$30.00	
	Grilled chicken breast and artichoke penne pasta	\$38.00	
	Char-Grilled King Salmon Fillet	\$44.00	
<b>Washington State Nametag (if needed)</b>	<b>Pin back</b>		<b>Magnetic back</b>
Name on nametag:		\$15.00	
<b>Fundraising table rental fee</b> (4' width, 8 table spaces available)		\$15.00	
<b>Registration fee:</b>		\$35.00	
<b>Late fee (if received after September 9, 2022)</b>		\$ 5.00	
		<b>Total:</b>	\$
<b>Dietary restrictions:</b>			

Make checks payable to GFWC-WS Fall Board and send to:

GFWC-WS Treasurer, Pinkie Eggleston  
27812 M Place  
Ocean Park, WA 98640-4882, [pinkienegg@centurytel.net](mailto:pinkienegg@centurytel.net)

**Registration deadline - September 9, 2022**

**No meal refunds after September 16, 2022; registration fee non-refundable**

**One form per person.**